

LEGEND:

▲ APPROXIMATE PCB SAMPLE LOCATION

S-1 SAMPLE NUMBER

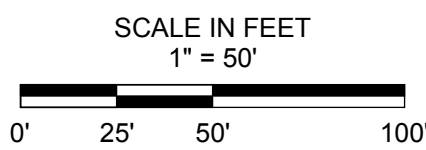
0.369 (0.5) TOTAL PCB DETECTION (DEPTH OF SAMPLE, FT)
PCB CONCENTRATION < 1.0 MG/KG (ND=NONE DETECTED)

1.48 (0.5) PCB CONCENTRATION < 4.0 MG/KG

7.71 (1.0) PCB CONCENTRATION < 10.0 MG/KG

11.1 (0.5) PCB CONCENTRATION ≥ 10.0 MG/KG

- NOTES:**
1. THE SURVEYED BASE PLAN SHOWING THE PROPOSED BIKE PATH WAS PROVIDED TO OTO IN ELECTRONIC FORMAT AND WAS CREATED BY FORESIGHT LAND SURVEYS. THE ORIGINAL DRAWING WAS TITLED "BORING LOCATION PLAN" (12/14/2016)
 2. TOTAL PCB CONCENTRATIONS WERE FORM ENVIRONMENTAL PROTECTION AGENCY (EPA) DOCUMENTS DATED 11/2002. THIS PCB DATA WAS COLLECTED BY EPA DURING THE ASSESSMENT OF PCB IMPACTS TO THE HOUSATONIC RIVER AND FLOOD PLAIN FROM HISTORIC GENERAL ELECTRIC (GE) OPERATIONS
 3. PCB SAMPLING LOCATION ARE APPROXIMATE DUE TO THE LARGE SCALE (1"=500') OF THE EPA PLAN DEPICTING THE SAMPLE LOCATIONS
 4. ALL DATA IS TO BE CONSIDERED ACCURATE ONLY TO THE DEGREE IMPLIED BY THE METHODS USED IN THE DEVELOPMENT OF THIS PLAN



BORING LEGEND

P# PROPOSED BORING LOCATION
ALONG CENTERLINE OF BIKEWAY

B# PROPOSED BORING LOCATION FOR
STRUCTURES (BOARDWALKS,
CULVERTS, & RETAINING WALLS)

NOTE: BORING LOCATIONS ARE APPROXIMATE
ONLY AND SUBJECT TO ADJUSTMENT BASED
ON FIELD CONDITIONS. PROPOSED BIKEWAY
ALIGNMENT AND GRADING IS PRELIMINARY
AND SUBJECT TO CHANGE.

O'Reilly, Talbot & Okun
ENGINEERING ASSOCIATES

293 Bridge Street, Suite 500 Springfield, MA 01103 413.788.6222
www.OTO-ENV.com

DESIGNED BY: SAM

DRAWN BY: DAH

CHECKED BY: KJO

DATE: 2/14/2017

REV. DATE:

**LEE BIKEWAY PROJECT
LEE, MASSACHUSETTS
PCB CONCENTRATIONS**

PROJECT NO.
J0939-12-01

SHEET NO.
1 OF 8

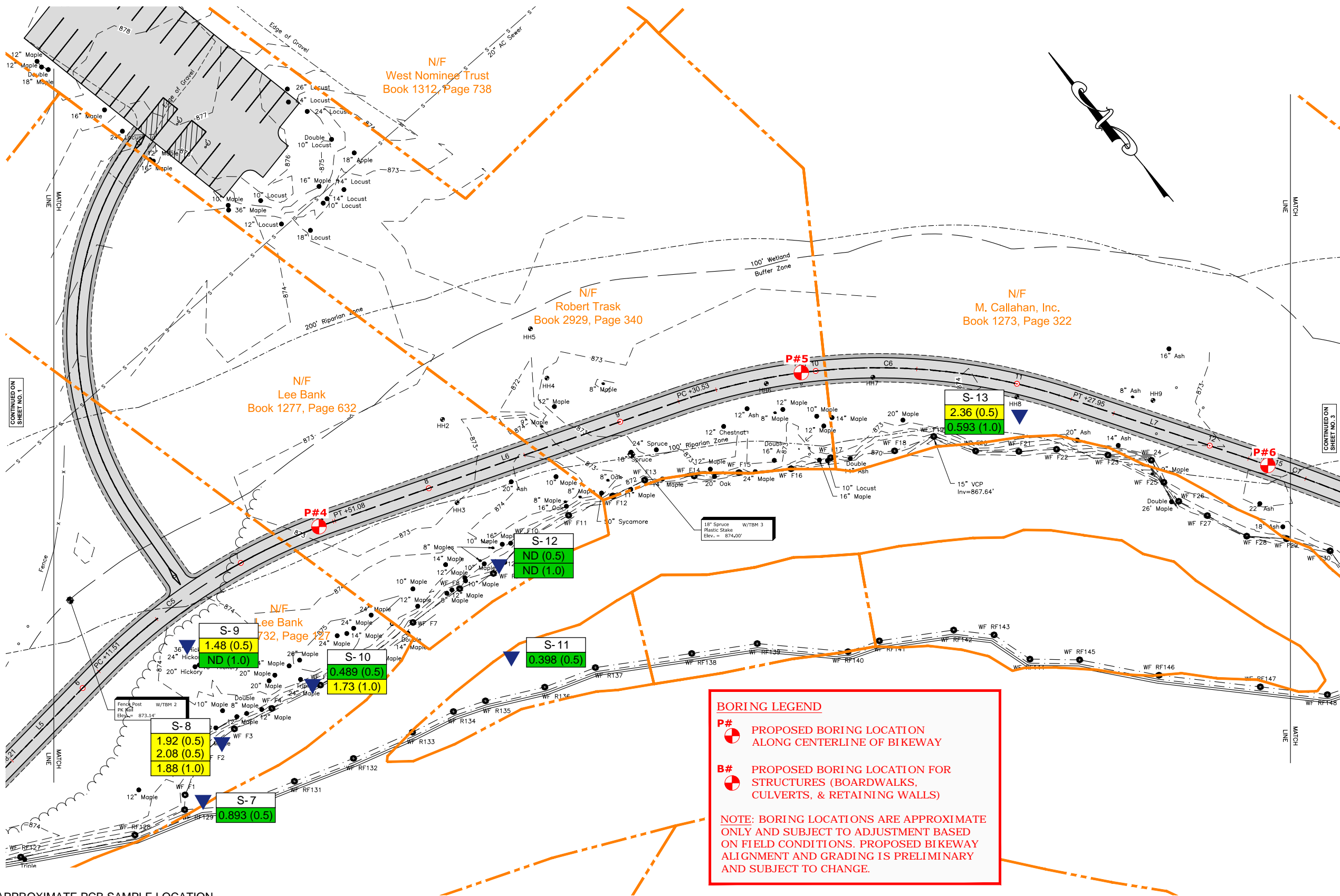
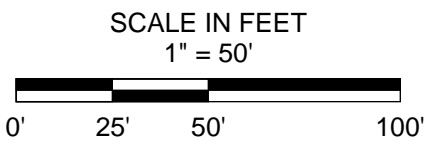
O:\0900\939 Foresight Land Service\12-01 Old Pleasant St Lee MA - ESA\Figures\Sheet 1 through Sheet 8.pdf

LEGEND:

- APPROXIMATE PCB SAMPLE LOCATION
- S-1 SAMPLE NUMBER
- 0.369 (0.5) TOTAL PCB DETECTION (DEPTH OF SAMPLE, FT)
PCB CONCENTRATION < 1.0 MG/KG (ND=NONE DETECTED)
- 1.48 (0.5) PCB CONCENTRATION < 4.0 MG/KG
- 7.71 (1.0) PCB CONCENTRATION < 10.0 MG/KG
- 11.1 (0.5) PCB CONCENTRATION ≥ 10.0 MG/KG

NOTES:

1. THE SURVEYED BASE PLAN SHOWING THE PROPOSED BIKE PATH WAS PROVIDED TO OTO IN ELECTRONIC FORMAT AND WAS CREATED BY FORESIGHT LAND SURVEYS. THE ORIGINAL DRAWING WAS TITLED "BORING LOCATION PLAN" (12/14/2016)
2. TOTAL PCB CONCENTRATIONS WERE FORM ENVIRONMENTAL PROTECTION AGENCY (EPA) DOCUMENTS DATED 11/2002. THIS PCB DATA WAS COLLECTED BY EPA DURING THE ASSESSMENT OF PCB IMPACTS TO THE HOUSATONIC RIVER AND FLOOD PLAIN FROM HISTORIC GENERAL ELECTRIC (GE) OPERATIONS
3. PCB SAMPLING LOCATION ARE APPROXIMATE DUE TO THE LARGE SCALE (1"=500') OF THE EPA PLAN DEPICTING THE SAMPLE LOCATIONS
4. ALL DATA IS TO BE CONSIDERED ACCURATE ONLY TO THE DEGREE IMPLIED BY THE METHODS USED IN THE DEVELOPMENT OF THIS PLAN



BORING LEGEND

P# PROPOSED BORING LOCATION
ALONG CENTERLINE OF BIKEWAY

B# PROPOSED BORING LOCATION FOR
STRUCTURES (BOARDWALKS,
CULVERTS, & RETAINING WALLS)

NOTE: BORING LOCATIONS ARE APPROXIMATE
ONLY AND SUBJECT TO ADJUSTMENT BASED
ON FIELD CONDITIONS. PROPOSED BIKEWAY
ALIGNMENT AND GRADING IS PRELIMINARY
AND SUBJECT TO CHANGE.

DESIGNED BY: SAM

DRAWN BY: DAH

CHECKED BY: KJO

DATE: 2/14/2017

REV. DATE:

LEE BIKEWAY PROJECT
LEE, MASSACHUSETTS

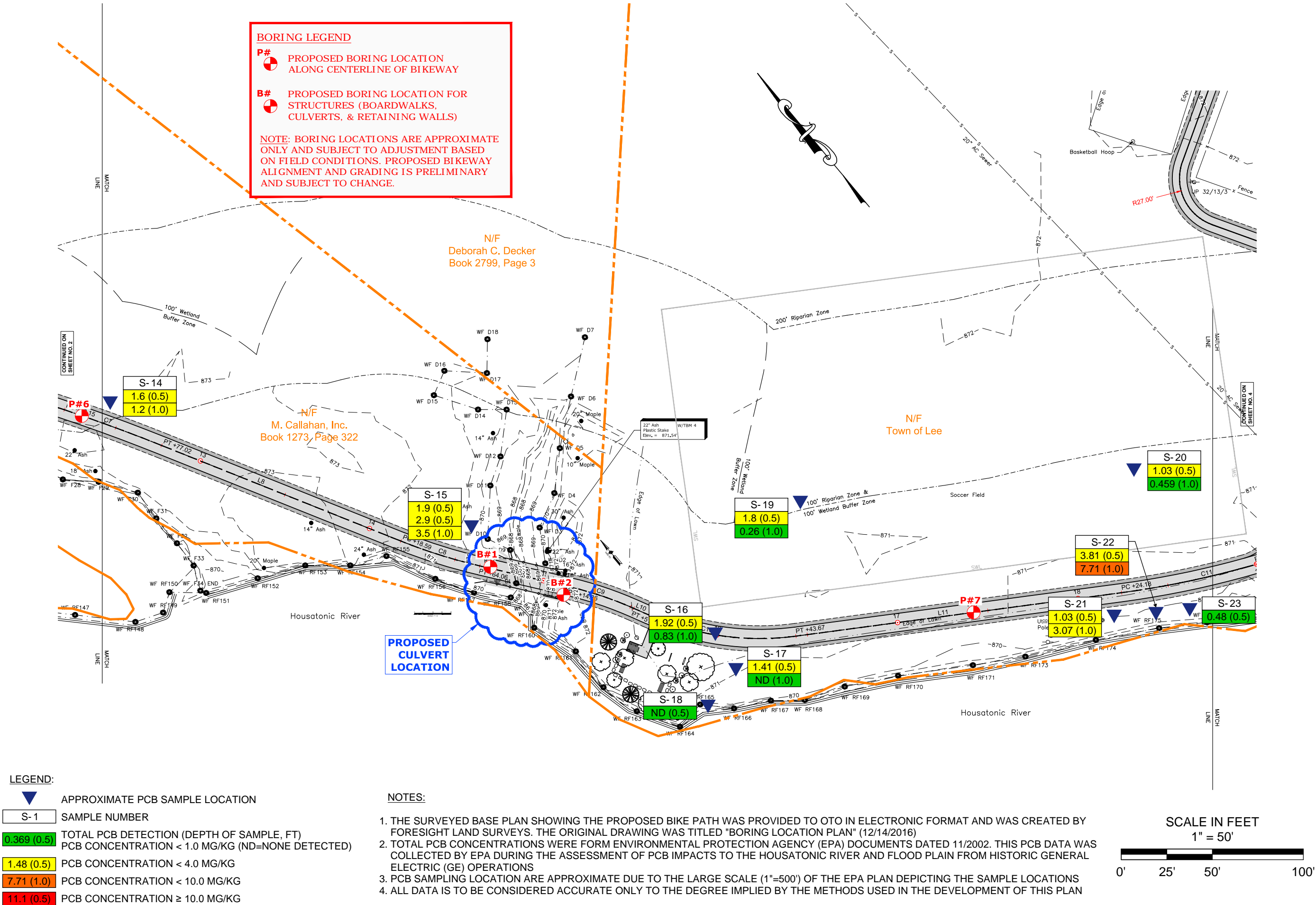
PCB CONCENTRATIONS

PROJECT NO.

J0939-12-01

SHEET NO.

2 OF 8

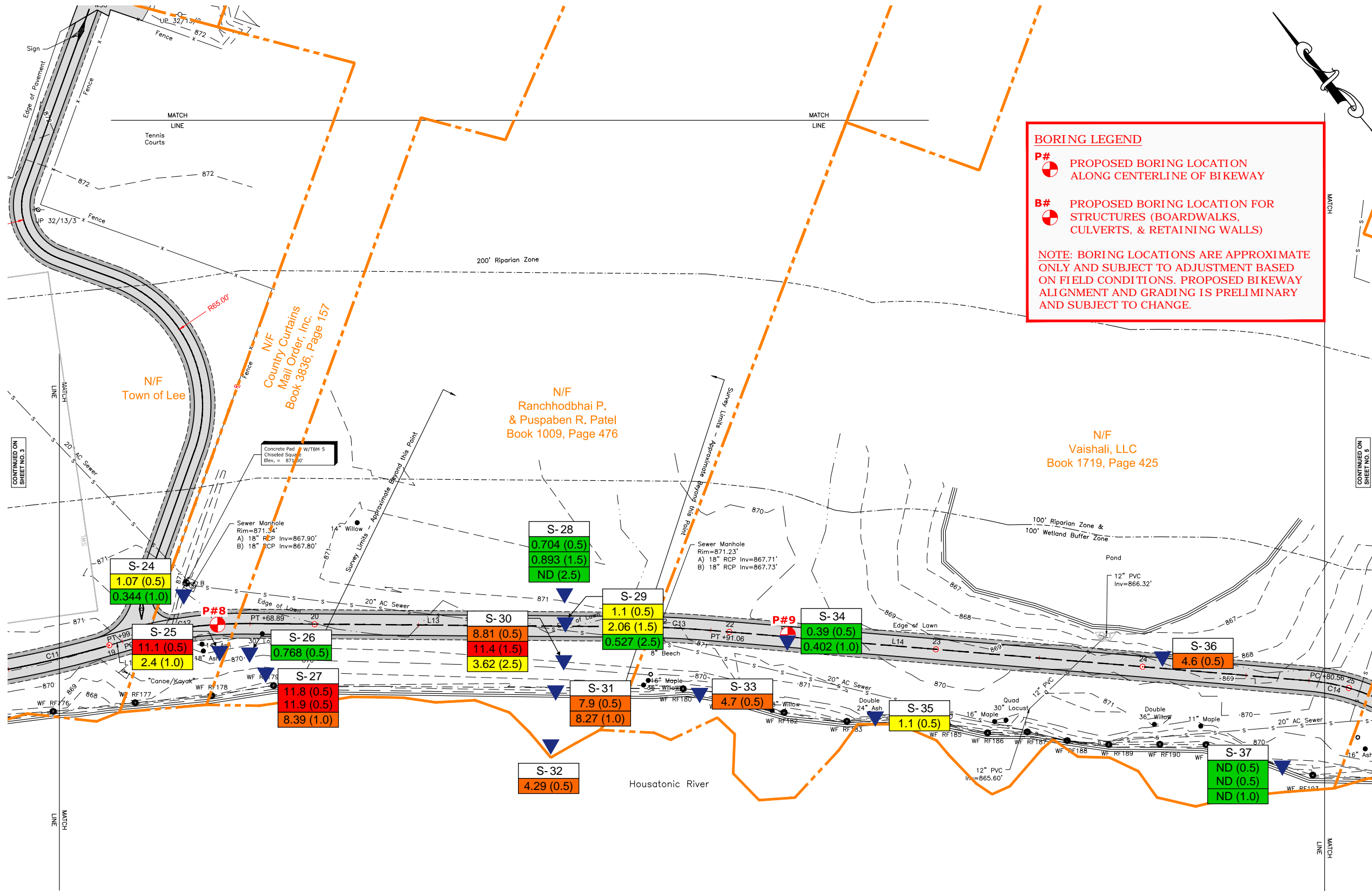


DESIGNED BY: SAM
DRAWN BY: DAH
CHECKED BY: KJO
DATE: 2/14/2017
REV. DATE:

**LEE BIKEWAY PROJECT
LEE, MASSACHUSETTS
PCB CONCENTRATIONS**

PROJECT NO.
J0939-12-01
SHEET NO.
3 OF 8

O:\J0900\939 Foresight Land Service\12-01 Old Pleasant St Lee MA - ESA\Figures\Sheet 1 through Sheet 8.pdf



DESIGNED BY: SAM

DRAWN BY: DAH

CHECKED BY: KJO

DATE: 2/14/2017

REV. DATE:

LEE BIKEWAY PROJECT
LEE, MASSACHUSETTS

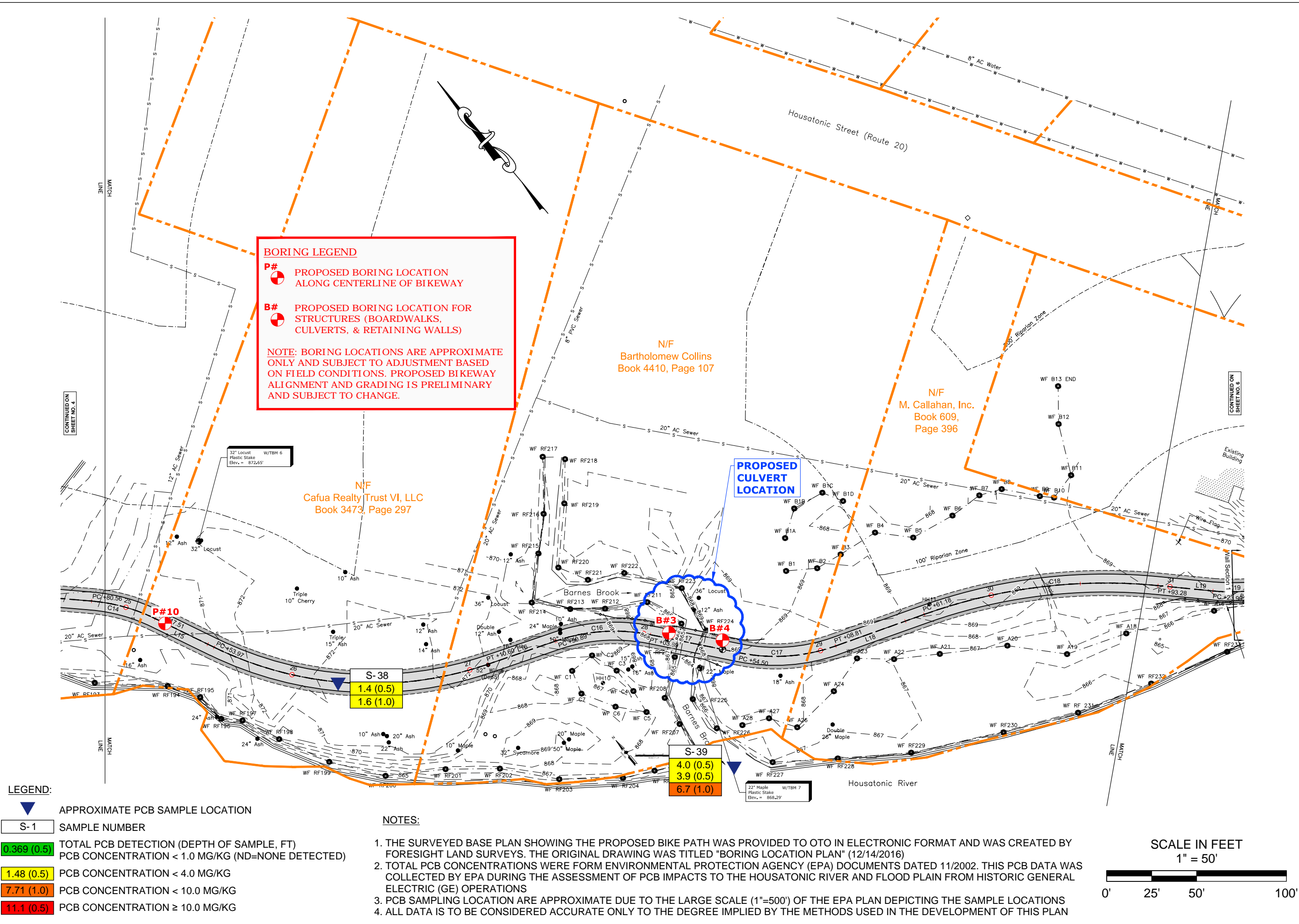
PCB CONCENTRATIONS

PROJECT NO.

J0939-12-01

SHEET NO.

4 OF 8



O'Reilly, Talbot & Okun
ENGINEERING ASSOCIATES

293 Bridge Street, Suite 500 Springfield, MA 01103 413.788.6222
www.OTO-ENV.com

DESIGNED BY: SAM

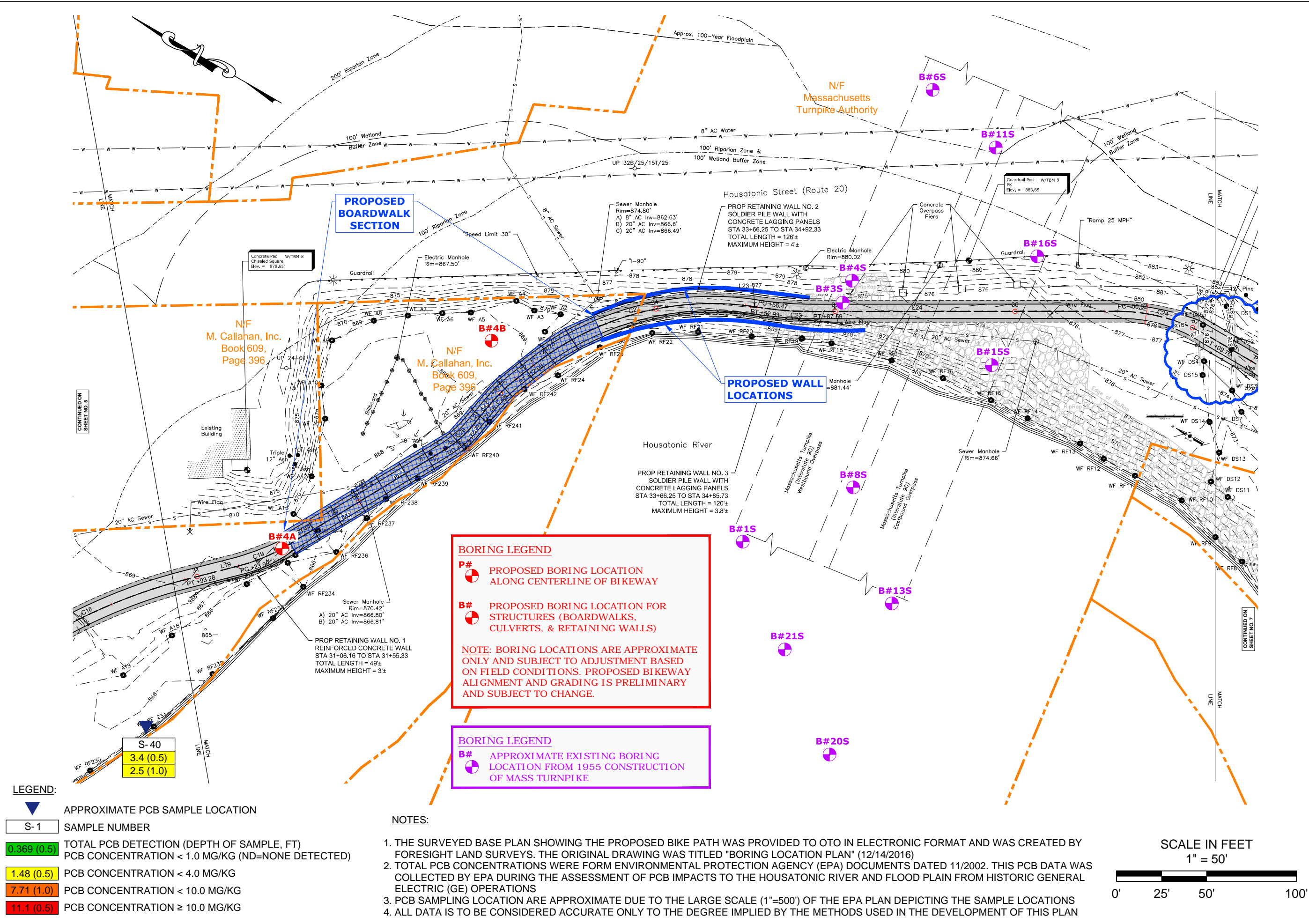
DRAWN BY: DAH

CHECKED BY: KJO

DATE: 2/14/2017

REV. DATE:

LEE BIKEWAY PROJECT
LEE, MASSACHUSETTS
PCB CONCENTRATIONS



O'Reilly, Talbot & Okun
ENGINEERING ASSOCIATES

293 Bridge Street, Suite 500 Springfield, MA 01103 413.788.6222
www.OTO-ENV.com

DESIGNED BY: SAM

DRAWN BY: DAH

CHECKED BY: KJO

DATE: 2/14/2017

REV. DATE:


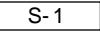
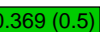
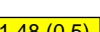
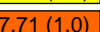
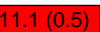
LEE BIKEWAY PROJECT
LEE, MASSACHUSETTS

PCB CONCENTRATIONS

PROJECT NO.
J0939-12-01

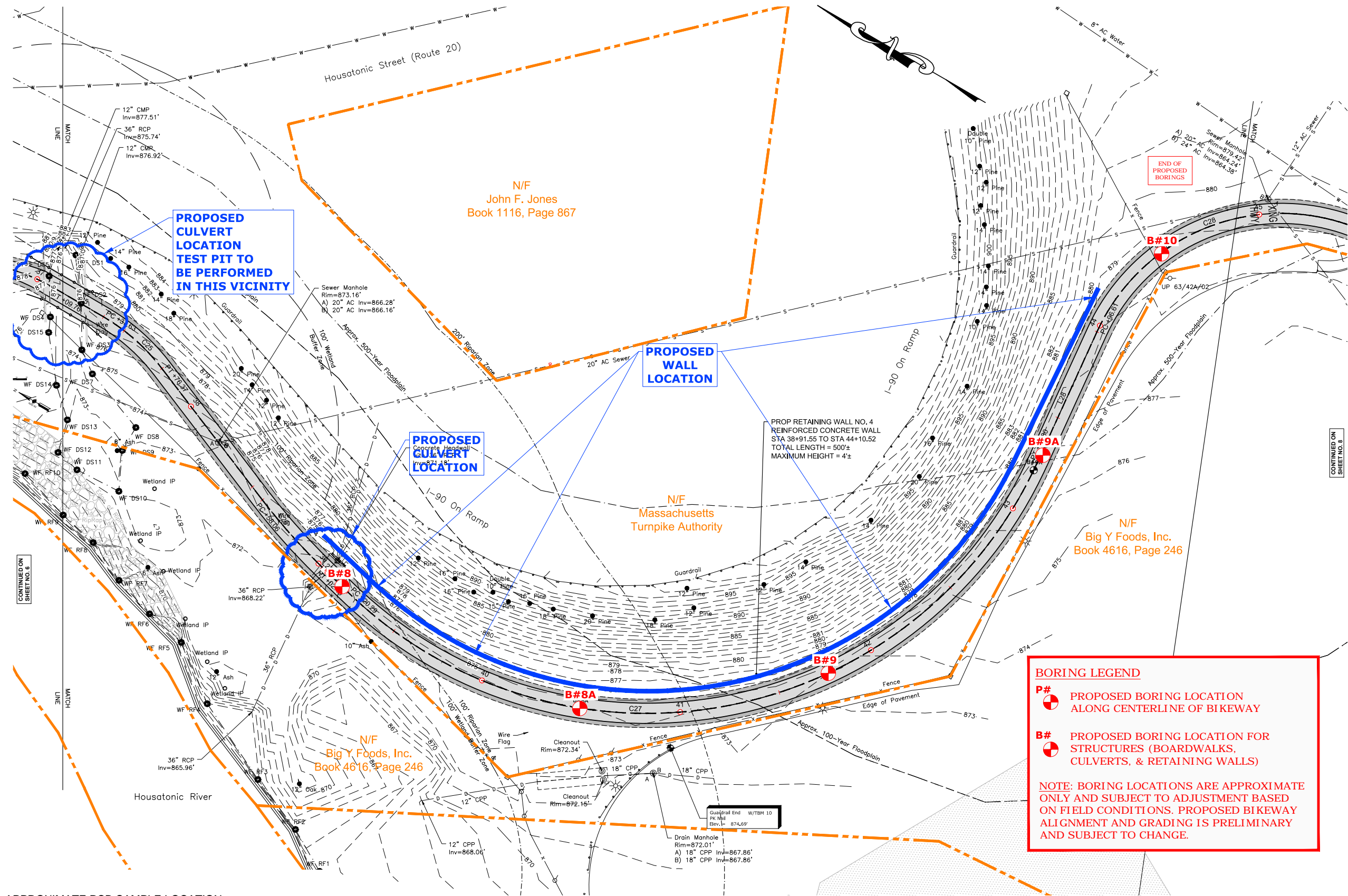
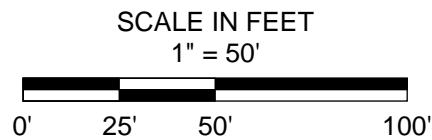
SHEET NO.
6 OF 8

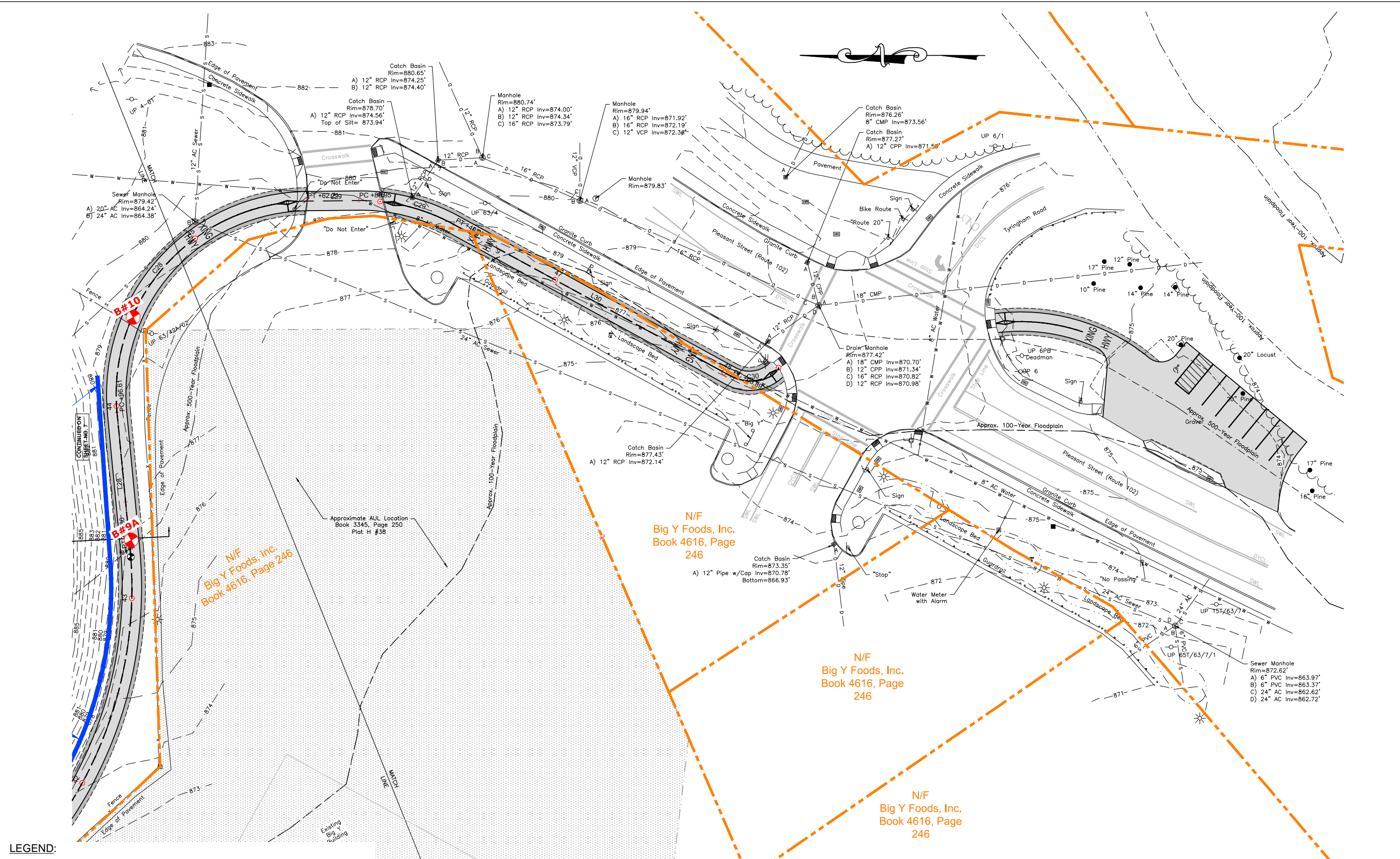
LEGEND:

	APPROXIMATE PCB SAMPLE LOCATION
	SAMPLE NUMBER
	TOTAL PCB DETECTION (DEPTH OF SAMPLE, FT) PCB CONCENTRATION < 1.0 MG/KG (ND=NONE DETECTED)
	PCB CONCENTRATION < 4.0 MG/KG
	PCB CONCENTRATION < 10.0 MG/KG
	PCB CONCENTRATION ≥ 10.0 MG/KG

NOTES:

1. THE SURVEYED BASE PLAN SHOWING THE PROPOSED BIKE PATH WAS PROVIDED TO OTO IN ELECTRONIC FORMAT AND WAS CREATED BY FORESIGHT LAND SURVEYS. THE ORIGINAL DRAWING WAS TITLED "BORING LOCATION PLAN" (12/14/2016)
2. TOTAL PCB CONCENTRATIONS WERE FORM ENVIRONMENTAL PROTECTION AGENCY (EPA) DOCUMENTS DATED 11/2002. THIS PCB DATA WAS COLLECTED BY EPA DURING THE ASSESSMENT OF PCB IMPACTS TO THE HOUSATONIC RIVER AND FLOOD PLAIN FROM HISTORIC GENERAL ELECTRIC (GE) OPERATIONS
3. PCB SAMPLING LOCATION ARE APPROXIMATE DUE TO THE LARGE SCALE (1"=500') OF THE EPA PLAN DEPICTING THE SAMPLE LOCATIONS
4. ALL DATA IS TO BE CONSIDERED ACCURATE ONLY TO THE DEGREE IMPLIED BY THE METHODS USED IN THE DEVELOPMENT OF THIS PLAN





LEGEND:

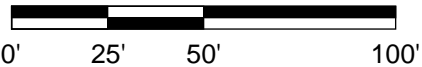
	APPROXIMATE PCB SAMPLE LOCATION
	SAMPLE NUMBER
	TOTAL PCB DETECTION (DEPTH OF SAMPLE, FT) PCB CONCENTRATION < 1.0 MG/KG (ND=NONE DETECTED)
	PCB CONCENTRATION < 4.0 MG/KG
	PCB CONCENTRATION < 10.0 MG/KG
	PCB CONCENTRATION ≥ 10.0 MG/KG

NOTES:

1. THE SURVEYED BASE PLAN SHOWING THE PROPOSED BIKE PATH WAS PROVIDED TO OTO IN ELECTRONIC FORMAT AND WAS CREATED BY FORESIGHT LAND SURVEYS. THE ORIGINAL DRAWING WAS TITLED "BORING LOCATION PLAN" (12/14/2016)
2. TOTAL PCB CONCENTRATIONS WERE FORM ENVIRONMENTAL PROTECTION AGENCY (EPA) DOCUMENTS DATED 11/2002. THIS PCB DATA WAS COLLECTED BY EPA DURING THE ASSESSMENT OF PCB IMPACTS TO THE HOUSATONIC RIVER AND FLOOD PLAIN FROM HISTORIC GENERAL ELECTRIC (GE) OPERATIONS
3. PCB SAMPLING LOCATION ARE APPROXIMATE DUE TO THE LARGE SCALE (1"=500') OF THE EPA PLAN DEPICTING THE SAMPLE LOCATIONS
4. ALL DATA IS TO BE CONSIDERED ACCURATE ONLY TO THE DEGREE IMPLIED BY THE METHODS USED IN THE DEVELOPMENT OF THIS PLAN

SCALE IN FEET

1" = 50'



DESIGNED BY: SAM

DRAWN BY: DAH

CHECKED BY: KJO

DATE: 2/14/2017

REV. DATE:

LEE BIKEWAY PROJECT
LEE, MASSACHUSETTS

PCB CONCENTRATIONS

PROJECT NO.

J0939-12-01

SHEET NO.

8 OF 8