

Enjoy the woods!

Longscope Park on Church Street in South Lee is "spruced" up for you to explore!



P.O. Box 702, Lee, MA 01238



"For the Love of Nature"
- Donato Cedrone

What is the Lee Land Trust?

We are an independent, non-profit, tax-deductible Trust founded in 1992 AND we are your neighbors! We want to preserve Lee's natural and historic heritage by working with individuals or organizations to protect their lands. We envision saving our farmlands, woods and water ways.

Lee has many offerings of sites to explore. You can begin with **Ferncliff Reservation** just off downtown Lee, **Longcope Park** on Church Street in South Lee, **Golden Hill Town Forest** on Golden Hill Road, **Lee Sandy Beach**, the Trust's new joint venture with the Trustees for our **Donato's Trail** on Rt. 20 in East Lee and our large state forests at **October Mountain** and **Beartown**.



Asters & Goldenrod



Butterfly Milkweed



Joe Pye Weed



Zinnias



Coneflower



monarchjointventure.org

Monarch butterfly lifecycle on a milkweed plant

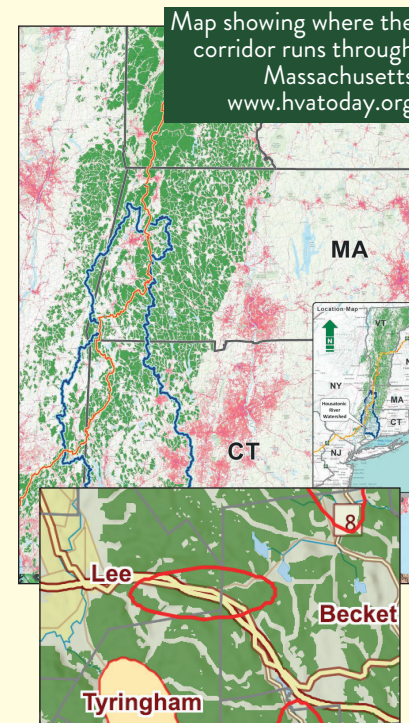
Recent items you may have read about in the news are directly related to the work we do:



The extended projects of *Berkshire Wildlife Linkages*, *Follow the Forest* and other environmental groups, are involved with a mission of preserving & acquiring land from Canada thru New England (a section right thru our Berkshire County!) down to the Hudson Highlands and on to New Jersey & Pennsylvania. Why? It would allow **secure safe passage** with land connected for **migrating animals**, of all sizes, thru this northeast corridor as the climate is forcing changes in their movements already. How? By connecting large forest/acreages of land with more parcels of land **connecting one forest to another** which can keep the movement flowing safely. And humans? Some of these areas cross roads and can be problematic for vehicles (humans) AND animals. New designs thru the DOTs and towns can make alternative routes, tunnels, bridges, etc. to keep safe travel for all.

This is an exciting, long term mission AND progress is being made in many ways across the world!

The extended projects of *Berkshire Wildlife Linkages*, *Follow the Forest* and other environmental groups, are involved with a mission of preserving & acquiring land from Canada thru



Map showing where the corridor runs through Massachusetts
www.hvatoday.org

Screenshot from *Follow the Forest* map of the corridor showing where a linkage needs to be created over Rte. 20 and I-90 in East Lee

hvatoday.org/connecting-forest-corridors

THE MONARCH NEEDS YOUR HELP

The Monarch Butterfly is quickly declining in numbers because of land changes, herbicides and climate issues. Their main plant for food & as a reproductive site, is the **MILKWEED** plant. They, as other butterflies, need more nectar plants especially later in the season. You can check out the Monarch site and plan for some special plants in your garden!