

# MASSACHUSETTS DEPARTMENT OF TRANSPORTATION HIGHWAY DIVISION

LEE  
MEADOW STREET OVER POWDER MILL BROOK

STATE	FED. AID PROJ. NO.	SHEET NO.	TOTAL SHEETS
MA		1	9
PROJECT FILE NO.		607597	

PRELIMINARY RIGHT OF WAY  
TITLE SHEET & INDEX

## PLAN AND PROFILE OF MEADOW STREET OVER POWDER MILL BROOK (BRIDGE NO. L-05-004)

IN THE TOWN OF

LEE

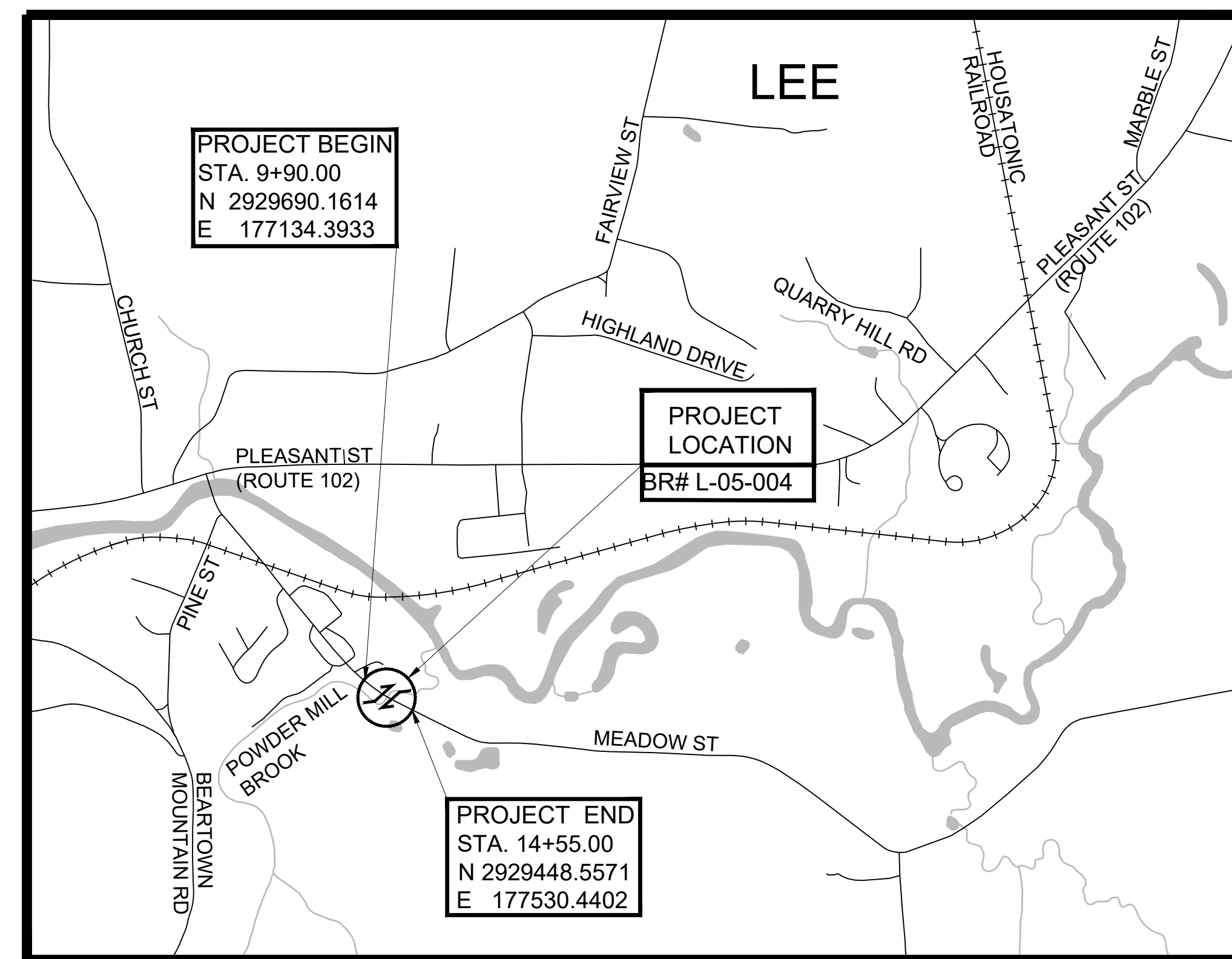
BERKSHIRE COUNTY

FEDERAL AID PROJECT NO.

THESE PLANS ARE SUPPLEMENTED BY THE OCTOBER 2017 CONSTRUCTION STANDARD DETAILS, THE 2015 OVERHEAD SIGNAL STRUCTURE AND FOUNDATION STANDARD DRAWINGS, MASSDOT TRAFFIC MANAGEMENT PLANS AND DETAIL DRAWINGS, THE 1990 STANDARD DRAWINGS FOR SIGNS AND SUPPORTS, THE 1968 STANDARD DRAWINGS FOR TRAFFIC SIGNALS AND HIGHWAY LIGHTING, AND THE LATEST EDITION OF THE AMERICAN STANDARD FOR NURSERY STOCK.

# PRELIMINARY RIGHT OF WAY

INDEX	
SHEET NO.	DESCRIPTION
1	TITLE SHEET & INDEX
2	LEGEND & ABBREVIATIONS
3-4	TYPICAL SECTIONS
5	CRITICAL PROFILE
6	PARCEL SUMMARY SHEET
7	LOCATION PLAN
8	PROPERTY PLAN
9	TEMPORARY TRAFFIC CONTROL PLAN



PROJECT BEGIN  
STA. 9+90.00  
N 2929690.1614  
E 177134.3933

PROJECT LOCATION  
BR# L-05-004

PROJECT END  
STA. 14+55.00  
N 2929448.5571  
E 177530.4402

LOCUS MAP



SCALE: 1" = 1000'

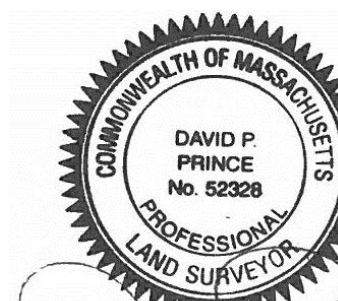
LENGTH OF PROJECT = 465.00 FEET = 0.088 MILES

**BASE MAP NOTES**

1. THE SURVEY BASE PLAN WAS PREPARED BY WSP USA, INC FOR MASSDOT IN DECEMBER, 2021 AND HAS NOT BEEN SUPPLEMENTED.
2. THE MOST RECENT SITE VISIT WAS COMPLETED IN SEPTEMBER, 2022 TO VERIFY THAT THE EXISTING CONDITIONS SHOWN ON THE PLAN ARE THE CURRENT CONDITIONS IN THE FIELD.
3. THE LAYOUT AND PROPERTY LINES SHOWN ON THE PLAN WERE COMPILED FROM ABUTTING DEEDS AND PLANS OF RECORD CERTIFIED BY DAVID P. PRINCE, P.L.S., REG. NO. 52328, WSP USA, INC. A PLS IN DIRECT CHARGE AND SUPERVISION OF THE SURVEY BASEMAP.
4. THE OWNERS HAVE BEEN CHECKED AND UPDATED AS OF JUNE, 2022 PER THE REGISTRY OF DEEDS.
5. THE PREQUALIFIED SURVEYOR UNDER THE S3 CATEGORY IS PARTICIPATING IN THE DEVELOPMENT OF THE ROW PLANS. DAVID P. PRINCE, P.L.S., REG. NO. 52328, WSP USA, INC. HAS VERIFIED HIGHWAY LAYOUT BASELINES AND SIDELINES, VERIFIED MUNICIPAL LAYOUTS, VERIFIED THAT ABUTTERS PROPERTY LINES ARE CREATED BASED ON RECORD DEEDS AND PLANS, VERIFIED CURRENT ABUTTERS OWNERSHIP INFORMATION, VERIFIED EXISTING PERMANENT EASEMENTS, AND VERIFIED ANY OTHER ELEMENTS IN THE SURVEY BASE PLAN THAT AFFECTS DISPOSITIONS AND LAND ACQUISITIONS.

**CERTIFICATION:**

THE LAYOUT LINES, AS REPRESENTED ON THE PRELIMINARY RIGHT OF WAY PLANS, ARE BASED UPON AN INSTRUMENT SURVEY THAT MEETS 250 CMR 6.02 AND ARE SUITABLE TO BE USED FOR A RECORDABLE PLAN.



3/9/2023

DAVID P. PRINCE, P.L.S.  
REG. NO. 52328  
WSP USA, INC.

DATE	DESCRIPTION	REV #
08/21/23	TE-1 UPDATED TO INCLUDE PROPOSED DEWATERING	2
03/01/23	TE-1 UPDATED TO INCLUDE TEMPORARY POLE LAYOUT, PUE-1 REMOVED	1
08/12/22	25% SUBMISSION	0

**GILL  
ENGINEERING**

63 KENDRICK STREET  
NEEDHAM, MA 02494  
781-355-7100  
781-355-7101 (FAX)

**RECOMMENDED FOR APPROVAL**

CHIEF ENGINEER \_\_\_\_\_ DATE \_\_\_\_\_

GENERAL SYMBOLS

EXISTING	PROPOSED	DESCRIPTION
JB	JB	JERSEY BARRIER
CB	CB	CATCH BASIN
	CB	CATCH BASIN CURB INLET
FP	FP	FLAG POLE
GP	GP	GAS PUMP
MB	MB	MAIL BOX
	□	POST SQUARE
○	○	POST CIRCULAR
⊕	⊕	WELL
○	○	ELECTRIC HANDHOLE
○	○	FENCE GATE POST
○	○	GAS GATE
⊕ BHL #	⊕ BHL #	BORING HOLE
⊕ MW #	⊕ MW #	MONITORING WELL
⊕ TP #	⊕ TP #	TEST PIT
⊕	⊕	HYDRANT
*	*	LIGHT POLE
□ CO.BD.		COUNTY BOUND
⊙		GPS POINT
⊙	⊙	CABLE MANHOLE
⊙	⊙	DRAINAGE MANHOLE
⊙	⊙	ELECTRIC MANHOLE
⊙	⊙	GAS MANHOLE
⊙	⊙	MISC MANHOLE
⊙	⊙	SEWER MANHOLE
⊙	⊙	TELEPHONE MANHOLE
⊙	⊙	WATER MANHOLE
MHB	MHB	MASSACHUSETTS HIGHWAY BOUND
MON		MONUMENT
SB		STONE BOUND
TB		TOWN OR CITY BOUND
△		TRAVERSE OR TRIANGULATION STATION
TPL or GUY	TPL or GUY	TROLLEY POLE OR GUY POLE
HTP		TRANSMISSION POLE
UFB	UFB	UTILITY POLE W/ FIREBOX
UPDL	UPDL	UTILITY POLE WITH DOUBLE LIGHT
ULT	ULT	UTILITY POLE W / 1 LIGHT
UPL	UPL	UTILITY POLE
○		BUSH
○		TREE
○		STUMP
○		SWAMP / MARSH
WG	WG	WATER GATE
PM	PM	PARKING METER
		OVERHEAD CABLE/WIRE

---100---	---99---	CONTOURS (ON-THE-GROUND SURVEY DATA)
---100---	---99---	CONTOURS (PHOTOGRAMMETRIC DATA)
---	---	UNDERGROUND DRAIN PIPE (DOUBLE LINE 24 INCH AND OVER)
---	---	UNDERGROUND ELECTRIC DUCT (DOUBLE LINE 24 INCH AND OVER)
---	---	UNDERGROUND GAS MAIN (DOUBLE LINE 24 INCH AND OVER)
---	---	UNDERGROUND SEWER MAIN (DOUBLE LINE 24 INCH AND OVER)
---	---	UNDERGROUND TELEPHONE DUCT (DOUBLE LINE 24 INCH AND OVER)
---	---	UNDERGROUND WATER MAIN (DOUBLE LINE 24 INCH AND OVER)
○	○	BALANCED STONE WALL
---	---	GUARD RAIL - STEEL POSTS
---	---	GUARD RAIL - WOOD POSTS
---	---	GUARD RAIL - DOUBLE FACE - STEEL POSTS
---	---	GUARD RAIL - DOUBLE FACE - WOOD POSTS
---	---	CHAIN LINK OR METAL FENCE
---	---	WOOD FENCE
○	○	SEDIMENT CONTROL BARRIER
~~~~~	~~~~~	SANDBAGS FOR DEWATERING
~~~~~	~~~~~	TREE LINE
---	---	SAWCUT LINE
---	---	TOP OR BOTTOM OF SLOPE
---	---	LIMIT OF EDGE OF PAVEMENT OR COLD PLANE AND OVERLAY
---	---	BANK OF RIVER OR STREAM
---	---	BORDER OF WETLAND
---	---	100 FT WETLAND BUFFER
---	---	200 FT RIVERFRONT BUFFER
---	---	STATE HIGHWAY LAYOUT
---	---	TOWN OR CITY LAYOUT
---	---	COUNTY LAYOUT
---	---	RAILROAD SIDELINE
---	---	TOWN OR CITY BOUNDARY LINE
---	---	PROPERTY LINE OR APPROXIMATE PROPERTY LINE
---	---	EASEMENT

PAVEMENT MARKINGS SYMBOLS

EXISTING	PROPOSED	DESCRIPTION
↖ ONLY	↖ ONLY	PAVEMENT ARROW - WHITE
---	---	LEGEND "ONLY" - WHITE
---	---	STOP LINE
---	CW	CROSSWALK
---	— SWL —	SOLID WHITE LINE
---	— SYL —	SOLID YELLOW LINE
---	— BWL —	BROKEN WHITE LINE
---	— BYL —	BROKEN YELLOW LINE
---	- - - DWL - - -	DOTTED WHITE LINE
---	- - - DYL - - -	DOTTED YELLOW LINE
====	==== DBWL	DOUBLE WHITE LINE
====	==== DBYL	DOUBLE YELLOW LINE

SURVEY LEGEND

⊙ BF #	BANK FLAG
⊕ BM #	BENCHMARK
□	BOUND (CONC, STONE, LAND COURT, ETC.)
←	GUY WIRE ANCHOR
○ IP	IRON PIPE
○ MAG	MAG NAIL
○	STUMP
△	TRAVERSE POINT
● TWW	TREE WITH WIRE REMAINS
○ WF-B-101	WETLAND FLAG

SURVEY ABBREVIATIONS

DEC	DECIDUOUS
FR	FRAME
OHW	OVERHEAD WIRE
EOG	EDGE OF GROUND
ETW	EDGE OF TRAVELED WAY
MMAG	MONUMENT MAGNETIC NAIL
MON - GPS	MONUMENT GLOBAL POSITION SYSTEM
MSTN	MONUMENT STONE
N/F	NOW OR FORMERLY
STY	STORY
VCP	VITRIFIED CLAY PIPE
WD	WOOD

PROJECT DESCRIPTION:

THE PROJECT AREA CONSISTS OF THE RIGHT-OF-WAY ON MEADOW STREET IN LEE, MASSACHUSETTS WHERE THE ROAD CROSSES POWDER MILL BROOK. THE EXISTING BRIDGE WAS CLOSED BY MASSDOT DUE TO ITS DETERIORATED CONDITION AND A TEMPORARY SINGLE LANE BRIDGE HAS BEEN PLACED OVER THE EXISTING BRIDGE UNTIL A NEW PERMANENT STRUCTURE IS CONSTRUCTED BY THIS PROJECT. THE EXISTING STRUCTURE WAS CONSTRUCTED IN 1939 AND IS A STEEL STRINGER BRIDGE WITH A CONCRETE DECK SUPPORTED ON CONCRETE GRAVITY TYPE ABUTMENTS WITH SPREAD FOOTINGS. THE TEMPORARY BRIDGE IS A PRE-ASSEMBLED TYPE SIMILAR TO AN ACROW BRIDGE SUPPORTED ON ITS OWN ABUTMENTS SUPPORTED ON CONCRETE FOUNDATIONS. IT IS UNKNOWN IF ABUTMENTS ARE FOUNDED ON PILES OR DEEP FOUNDATIONS.

THE PROPOSED PROJECT WILL CONSIST OF PRE-STRESSED CONCRETE NEXT F BEAMS SUPPORTED ON INTEGRAL ABUTMENTS WITH A SPAN LENGTH OF 64 FEET, AND AN OUT-TO-OUT WIDTH OF 27 FEET 9 INCHES. IN ADDITION, THE EXISTING WINGWALLS AND MOST OF THE ABUTMENT WILL BE DEMOLISHED; A SMALL PORTION OF THE EXISTING ABUTMENT FOOTINGS WILL REMAIN AND BE CAPPED TO ASSIST IN SCOUR COUNTERMEASURES. BENDWAY WEIRS WILL BE ADDED JUST UPSTREAM OF THE BRIDGE AS WELL AS STREAM/BANK RECONFIGURATION TO MITIGATE FUTURE SCOUR. IT IS ESTIMATED THAT THE TOTAL PROJECT LENGTH WILL BE APPROXIMATELY 465 FEET, INCLUDING 202 FT OF ROADWAY APPROACH WORK TO THE WEST OF THE BRIDGE AND 199 FT TO THE EAST.

ABBREVIATIONS

GENERAL	DESCRIPTION
AADT	ANNUAL AVERAGE DAILY TRAFFIC
ABAN	ABANDON
ADJ	ADJUST
APPROX.	APPROXIMATE
A.C.	ASPHALT CONCRETE
ACCM PIPE	ASPHALT COATED CORRUGATED METAL PIPE
BIT.	BITUMINOUS
BC	BOTTOM OF CURB
BD.	BOUND
BL	BASELINE
BLDG	BUILDING
BM	BENCHMARK
BO	BY OTHERS
BOS	BOTTOM OF SLOPE
BR.	BRIDGE
CB	CATCH BASIN
CBCI	CATCH BASIN WITH CURB INLET
CC	CEMENT CONCRETE
CCM	CEMENT CONCRETE MASONRY
CEM	CEMENT
CI	CURB INLET
CIP	CAST IRON PIPE
CLF	CHAIN LINK FENCE
CL	CENTERLINE
CMP	CORRUGATED METAL PIPE
CSP	CORRUGATED STEEL PIPE
CO.	COUNTY
CONC	CONCRETE
CONT	CONTINUOUS
CONST	CONSTRUCTION
CR GR	CROWN GRADE
DHV	DESIGN HOURLY VOLUME
DI	DROP INLET
DIA	DIAMETER
DIP	DUCTILE IRON PIPE
DW	STEADY DON'T WALK - PORTLAND ORANGE
DWY	DRIVEWAY
ELEV (or EL.)	ELEVATION
EMB	EMBANKMENT
EOP	EDGE OF PAVEMENT
EXIST (or EX)	EXISTING
EXC	EXCAVATION
F&C	FRAME AND COVER
F&G	FRAME AND GRATE
FDN.	FOUNDATION
FLDSTN	FIELDSTONE
GAR	GARAGE
GD	GROUND
GG	GAS GATE
GI	GUTTER INLET
GIP	GALVANIZED IRON PIPE
GRAN	GRANITE
GRAV	GRAVEL
GRD	GUARD
HDW	HEADWALL
HMA	HOT MIX ASPHALT
HOR	HORIZONTAL
HYD	HYDRANT
INV	INVERT
JCT	JUNCTION
L	LENGTH OF CURVE
LB	LEACH BASIN
LP	LIGHT POLE
LT	LEFT
MAX	MAXIMUM
MB	MAILBOX
MH	MANHOLE
MHB	MASSACHUSETTS HIGHWAY BOUND
MIN	MINIMUM
NIC	NOT IN CONTRACT
NO.	NUMBER
PC	POINT OF CURVATURE
PCC	POINT OF COMPOUND CURVATURE
P.G.L.	PROFILE GRADE LINE
PI	POINT OF INTERSECTION
POC	POINT ON CURVE
POT	POINT ON TANGENT
PRC	POINT OF REVERSE CURVATURE
PROJ	PROJECT
PROP	PROPOSED
PSB	PLANTABLE SOIL BORROW
PT	POINT OF TANGENCY
PVC	POINT OF VERTICAL CURVATURE
PVI	POINT OF VERTICAL INTERSECTION
PVT	POINT OF VERTICAL TANGENCY
PVMT	PAVEMENT
PWW	PAVED WATER WAY

LEE  
MEADOW STREET OVER POWDER MILL BROOK

STATE	FED. AID PROJ. NO.	SHEET NO.	TOTAL SHEETS
MA		2	9
PROJECT FILE NO.		607597	

PRELIMINARY RIGHT OF WAY  
LEGEND & ABBREVIATIONS

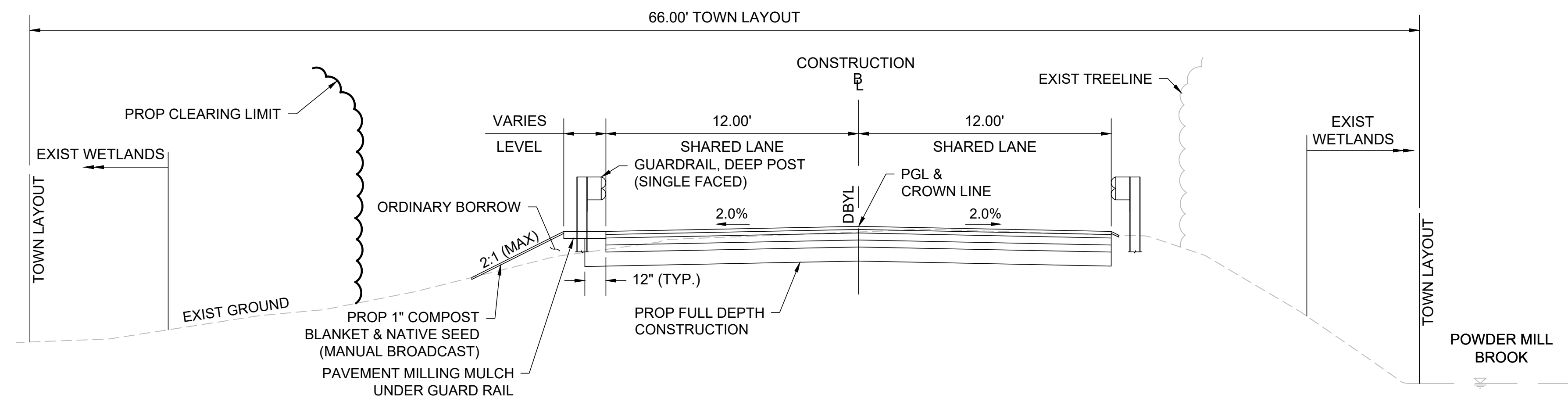
ABBREVIATIONS (cont.)

GENERAL	DESCRIPTION
R	RADIUS OF CURVATURE
R&D	REMOVE AND DISPOSE
RCP	REINFORCED CONCRETE PIPE
RD	ROAD
RDWY	ROADWAY
REM	REMOVE
RET	RETAIN
RET WALL	RETAINING WALL
ROW	RIGHT OF WAY
RR	RAILROAD
R&R	REMOVE AND RESET
R&S	REMOVE AND STACK
RT	RIGHT
SB	STONE BOUND
SHLD	SHOULDER
SMH	SEWER MANHOLE
ST	STREET
STA	STATION
SSD	STOPPING SIGHT DISTANCE
SHLO	STATE HIGHWAY LAYOUT LINE
SW	SIDEWALK
T	TANGENT DISTANCE OF CURVE/TRUCK %
TAN	TANGENT
TEMP	TEMPORARY
TC	TOP OF CURB
TOS	TOP OF SLOPE
TYP	TYPICAL
UP	UTILITY POLE
VAR	VARIES
VERT	VERTICAL
VC	VERTICAL CURVE
WCR	WHEEL CHAIR RAMP
WG	WATER GATE
WIP	WROUGHT IRON PIPE
WM	WATER METER/WATER MAIN
X-SECT	CROSS SECTION

LEE  
MEADOW STREET OVER POWDER MILL BROOK

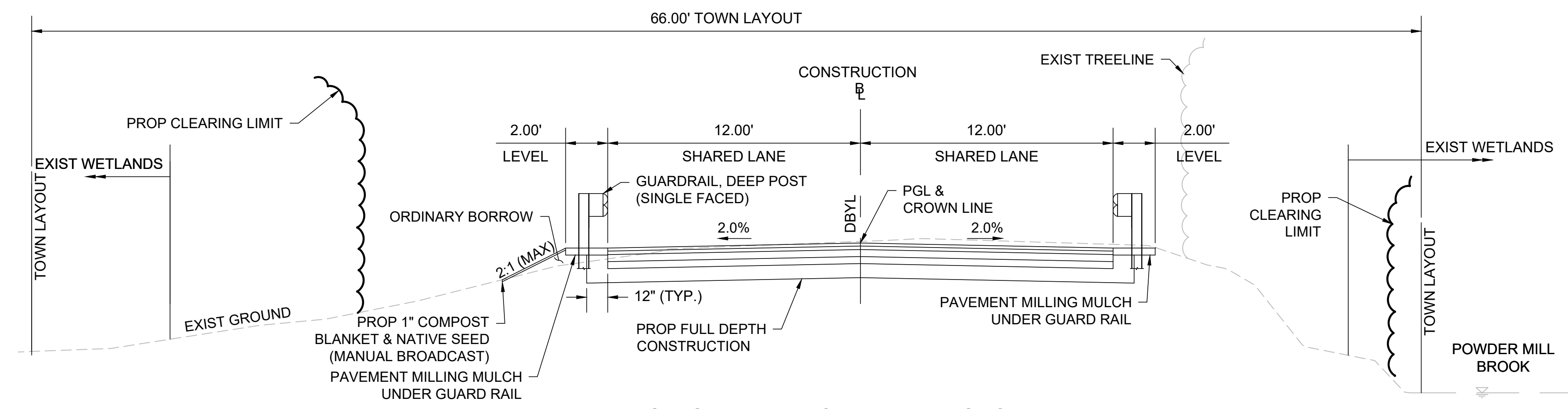
STATE	FED. AID PROJ. NO.	SHEET NO.	TOTAL SHEETS
MA		3	9
PROJECT FILE NO.		607597	

PRELIMINARY RIGHT OF WAY  
TYPICAL SECTIONS 1 OF 2



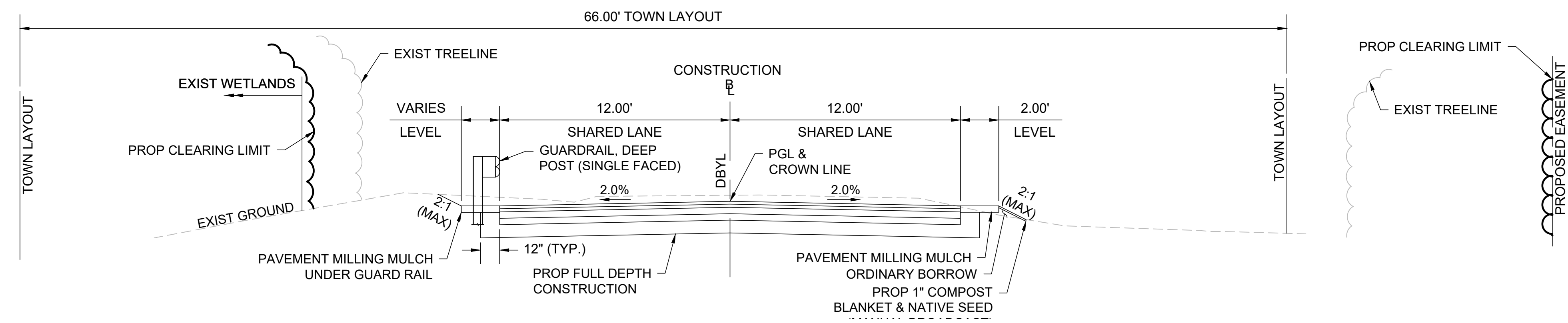
MEADOW STREET WESTERN APPROACH - FULL DEPTH

NOT TO SCALE  
STA 10+30 TO STA 11+35



MEADOW STREET WESTERN APPROACH - FULL DEPTH

NOT TO SCALE  
STA 11+35 TO STA 11+54  
STA 11+84 TO STA 11+90



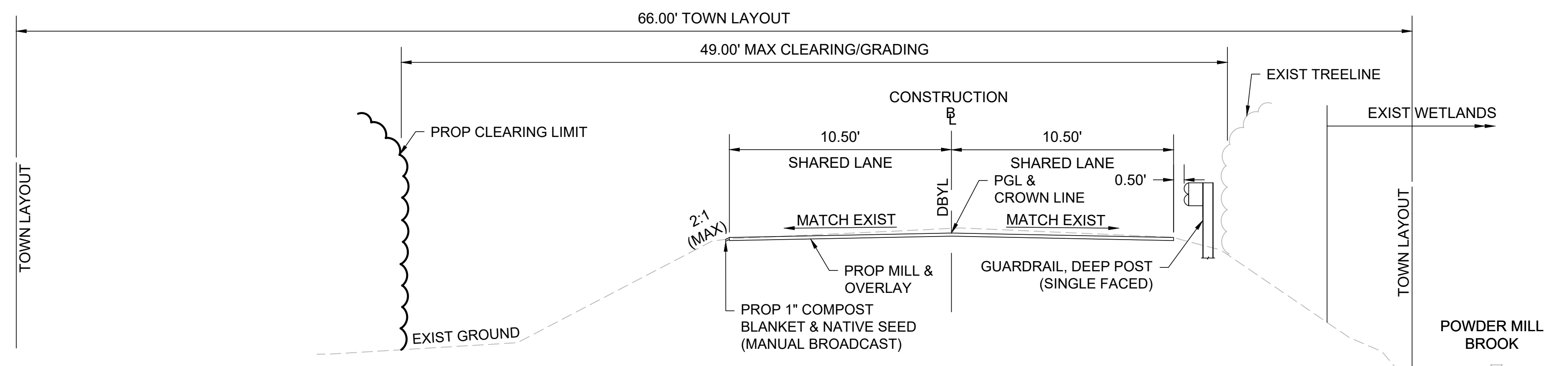
MEADOW STREET EASTERN APPROACH - FULL DEPTH

NOT TO SCALE  
STA 12+58 TO STA 12+65  
STA 12+95 TO STA 14+30

LEE  
MEADOW STREET OVER POWDER MILL BROOK

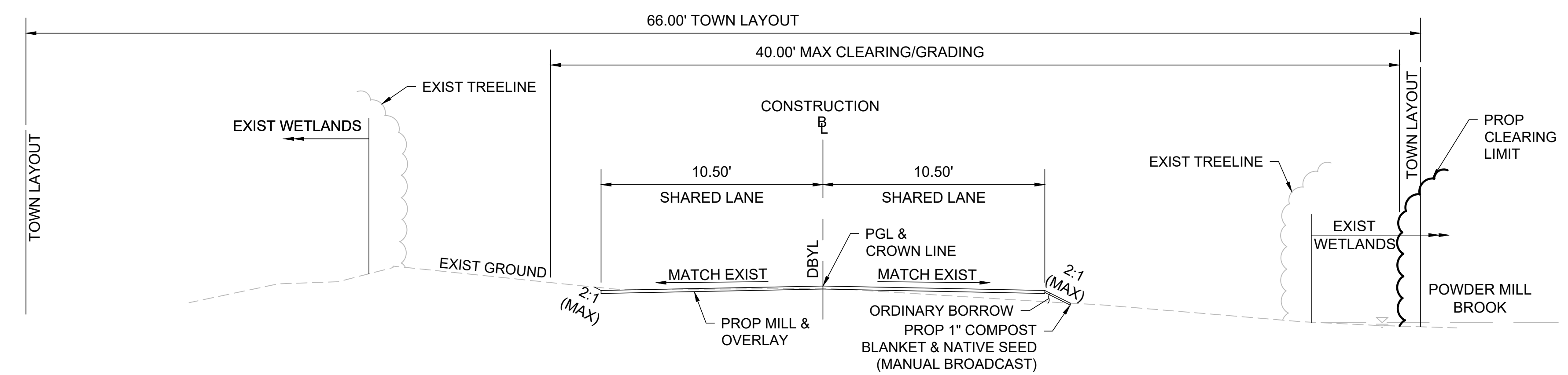
STATE	FED. AID PROJ. NO.	SHEET NO.	TOTAL SHEETS
MA		4	9
PROJECT FILE NO.		607597	

PRELIMINARY RIGHT OF WAY  
TYPICAL SECTIONS 2 OF 2



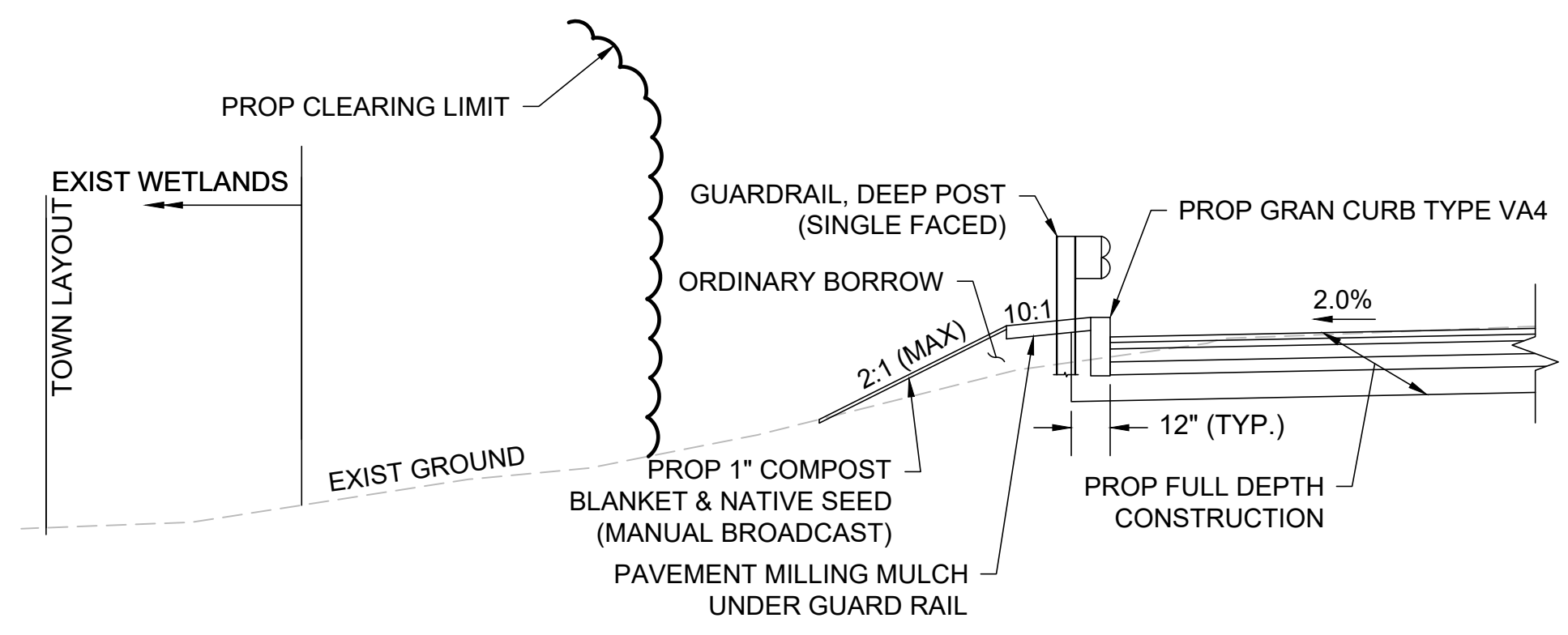
MEADOW STREET WESTERN APPROACH - MILL & OVERLAY

NOT TO SCALE  
STA 9+90 TO STA 10+30



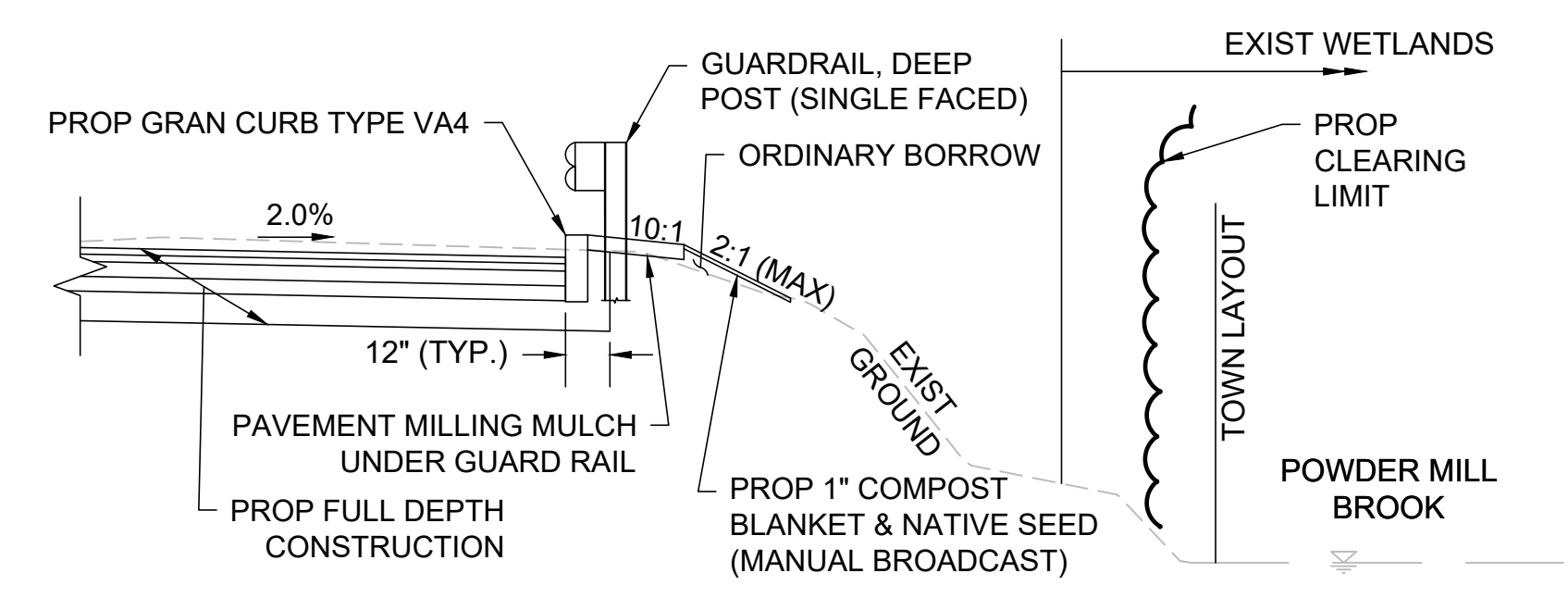
MEADOW STREET EASTERN APPROACH - MILL & OVERLAY

NOT TO SCALE  
STA 14+30 TO STA 14+55



FULL DEPTH WITH PROP CURB AND GUARDRAIL

NOT TO SCALE  
STA 11+65 TO STA 11+84 LT  
STA 12+76 TO STA 12+95 LT



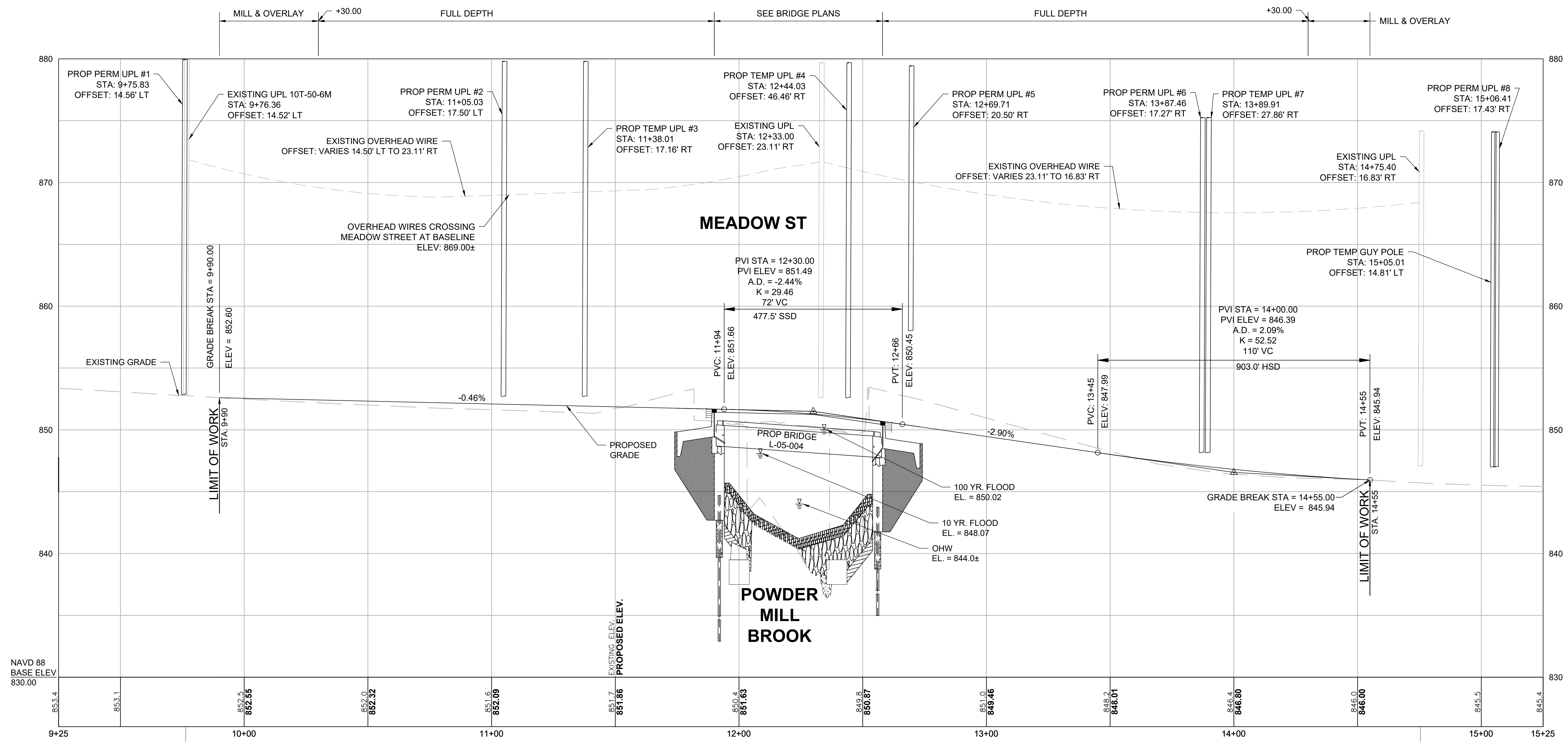
FULL DEPTH WITH PROP CURB AND GUARDRAIL

NOT TO SCALE  
STA 11+54 TO STA 11+72 RT  
STA 12+65 TO STA 12+81 RT

LEE  
MEADOW STREET OVER POWDER MILL BROOK

STATE	FED. AID PROJ. NO.	SHEET NO.	TOTAL SHEETS
MA		5	9
PROJECT FILE NO.		607597	

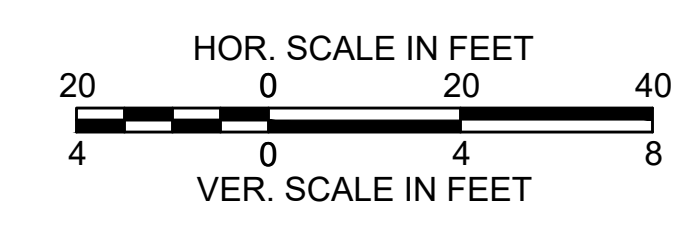
PRELIMINARY RIGHT OF WAY  
CRITICAL PROFILE



NAVD 88  
BASE ELEV  
830.00

Benchmark "X"  
NAIL IN UPL  
Elevation = 851.67  
Sta. 9+76.36, 14.52' LT

Benchmark "X"  
NAIL IN UPL  
Elevation = 845.48  
Sta. 14+75.40, 16.83' RT



LEE  
MEADOW STREET OVER POWDER MILL BROOK

STATE	FED. AID PROJ. NO.	SHEET NO.	TOTAL SHEETS
MA		6	9
PROJECT FILE NO.		607597	

PRELIMINARY RIGHT OF WAY  
PARCEL SUMMARY SHEET

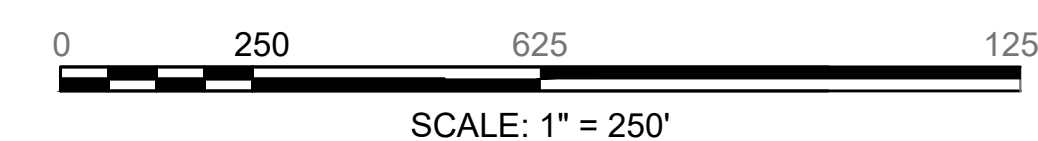
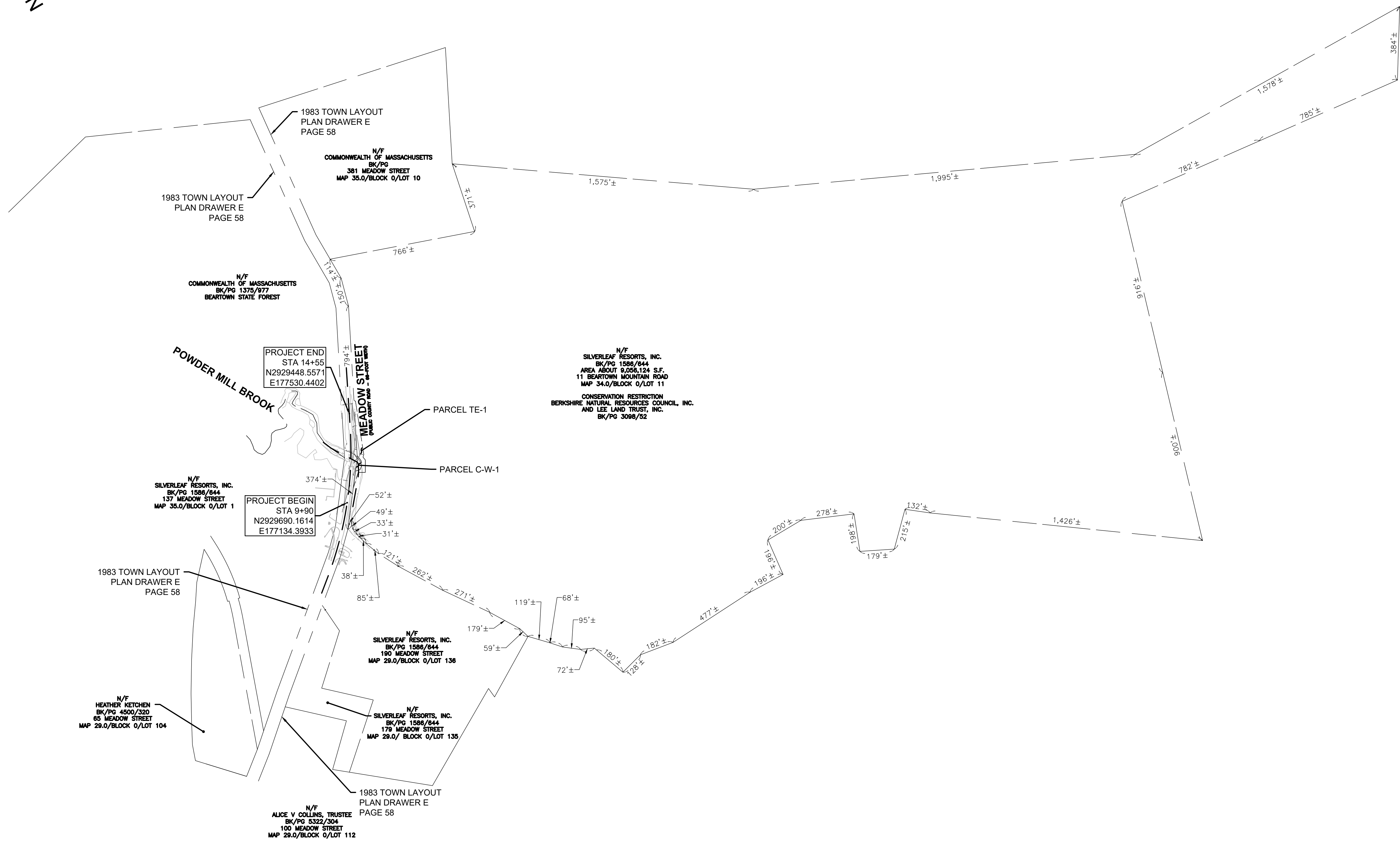
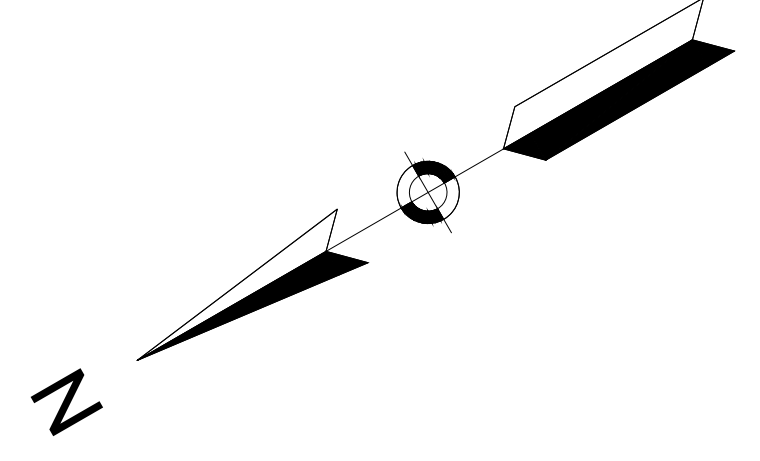
PROJECT TOTALS			
AFFECTED PROPERTIES	FEE TAKINGS	PERMANENT EASEMENTS	TEMPORARY EASEMENTS
1	0	1	1

PARCEL NO.	PLAN SHEET NO.	TITLEHOLDER	TITLE REFERENCE				AREA (S.F. +/-)						TOTAL PROPERTY AREA (S.F.)	FRONTAGE ON ROW PLAN (FT.)	PROPERTY ADDRESS	REMARKS	LAND RESTRICTION
			DEED BOOK	PAGE NO.	LCC NO.	CERT NO.	TAKEN		EASEMENT		TOTAL TAKEN	REMAINING					
							CITY	STATE	TYPE	AREA							
C-W-1	7, 8	SILVERLEAF RESORTS, INC	1586	644	N/A	N/A	-	-	PERM.	1,561	-	-	9,056,124	1,432	11 BEARTOWN MOUNTAIN ROAD	STREAM CHANNEL RESTORATION, BENDWAY WEIRS, RETAINING WALL	CONSERVATION RESTRICTION BOOK 3098 PAGE 52
TE-1	7, 8	SILVERLEAF RESORTS, INC	1586	644	N/A	N/A	-	-	TEMP.	8,937	-	-				TEMPORARY UTILITY POLES AND GUY WIRES, OVERHEAD WIRES, SELECTIVE CLEARING AND THINNING, REMOVAL OF EXISTING WINGWALL, GRADING, SEDIMENT CONTROL BARRIER, AND PROPOSED DEWATERING	CONSERVATION RESTRICTION BOOK 3098 PAGE 52

LEE  
MEADOW STREET OVER POWDER MILL BROOK

STATE	FED. AID PROJ. NO.	SHEET NO.	TOTAL SHEETS
MA		7	9
PROJECT FILE NO.		607597	

PRELIMINARY RIGHT OF WAY  
LOCATION PLAN



LEE  
MEADOW STREET OVER POWDER MILL BROOK

STATE	FED. AID PROJ. NO.	SHEET NO.	TOTAL SHEETS
MA		8	9
PROJECT FILE NO. 607597			

PRELIMINARY RIGHT OF WAY  
PROPERTY PLAN

N/F  
COMMONWEALTH OF MASSACHUSETTS  
DEPARTMENT OF CONSERVATION AND RECREATION  
BK/PG 1375/977  
381 MEADOW STREET  
MAP 35.0/BLOCK 0/LOT 01A

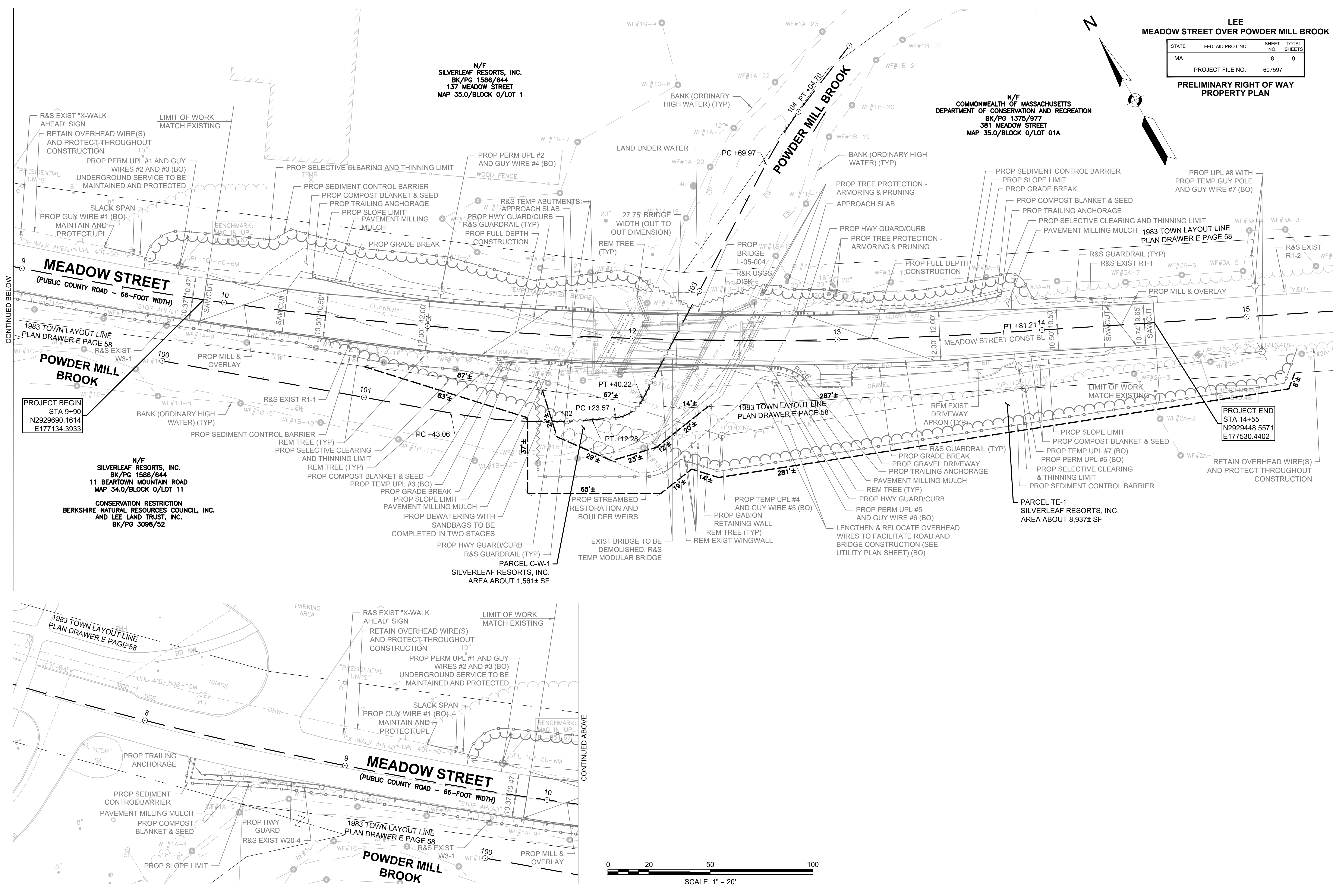
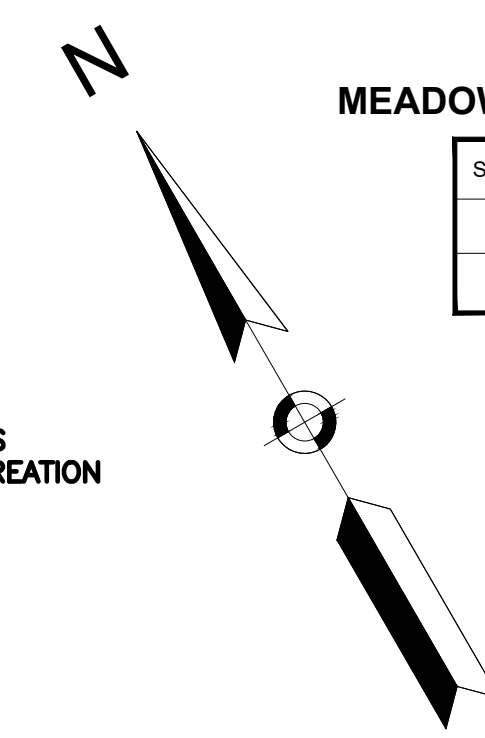
N/F  
SILVERLEAF RESORTS, INC.  
BK/PG 1586/644  
137 MEADOW STREET  
MAP 35.0/BLOCK 0/LOT 1

N/F  
SILVERLEAF RESORTS, INC.  
BK/PG 1586/644  
11 BEARTOWN MOUNTAIN ROAD  
MAP 34.0/BLOCK 0/LOT 11

CONSERVATION RESTRICTION  
BERKSHIRE NATURAL RESOURCES COUNCIL, INC.  
AND LEE LAND TRUST, INC.  
BK/PG 3098/52

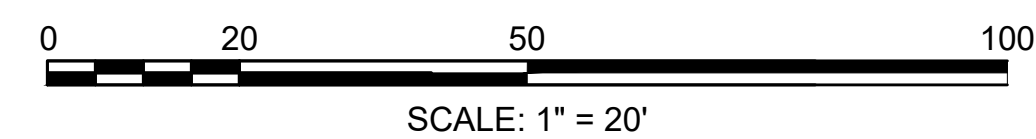
PARCEL C-W-1  
SILVERLEAF RESORTS, INC.  
AREA ABOUT 1,561± SF

PARCEL TE-1  
SILVERLEAF RESORTS, INC.  
AREA ABOUT 8,937± SF



CONTINUED BELOW

CONTINUED ABOVE

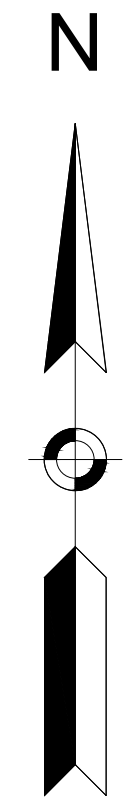




**LEE**  
**MEADOW STREET OVER POWDER MILL BROOK**

STATE	FED. AID PROJ. NO.	SHEET NO.	TOTAL SHEETS
MA		9	9
PROJECT FILE NO. 607597			

**PRELIMINARY RIGHT OF WAY**  
**TEMPORARY TRAFFIC CONTROL PLAN**

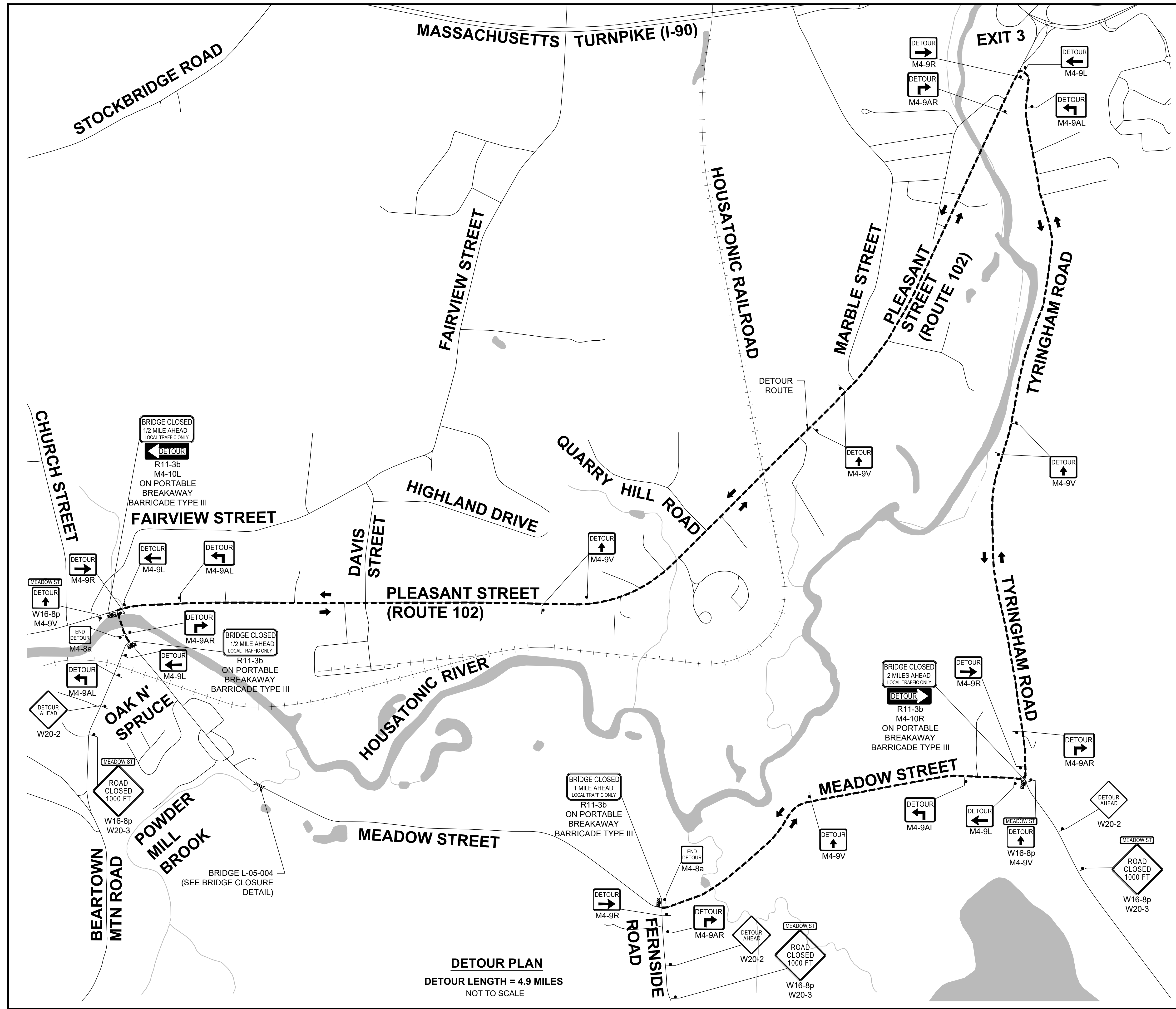


**LEGEND:**

- PORTABLE BREAKAWAY BARRICADE TYPE III
- PORTABLE CHANGEABLE MESSAGE SIGN (PCMS)
- DIRECTION OF TRAFFIC
- WORK ZONE
- SIGN
- DETOUR ROUTE
- EXISTING BRIDGE
- MEDIAN BARRIER
- TEMPORARY FENCE

**NOTES:**

1. ALL TEMPORARY TRAFFIC CONTROL WORK SHALL CONFORM TO THE LATEST EDITION OF THE "MANUAL ON UNIFORM TRAFFIC CONTROL DEVICES" (MUTCD) AND ALL REVISIONS, UNLESS SUPERCEDED BY THESE PLANS.
2. ALL SIGN LEGENDS, BORDERS, AND MOUNTING SHALL BE IN ACCORDANCE WITH THE MUTCD.
3. TEMPORARY CONSTRUCTION SIGNING AND ALL OTHER TRAFFIC CONTROL DEVICES SHALL BE IN PLACE PRIOR TO THE START OF ANY WORK.
4. TEMPORARY CONSTRUCTION SIGNING, BARRICADES, AND ALL OTHER NECESSARY WORK ZONE TRAFFIC CONTROL DEVICES SHALL BE REMOVED FROM THE HIGHWAY OR COVERED WHEN THEY ARE NOT REQUIRED FOR CONTROL OF TRAFFIC.
5. SIGNS AND SIGN SUPPORTS LOCATED ON OR NEAR THE TRAVELED WAY, CHANNELIZING DEVICES, BARRIERS, AND CRASH ATTENUATORS MUST PASS THE CRITERIA SET FORTH IN NCHRP REPORT 350, "RECOMMENDED PROCEDURES FOR THE SAFETY PERFORMANCE EVALUATION OF HIGHWAY FEATURES" AND/OR "MANUAL FOR ASSESSING SAFETY HARDWARE" (MASH).
6. CONTRACTORS SHALL NOTIFY EACH ABUTTER AT LEAST 24 HOURS IN ADVANCE OF THE START OF ANY WORK THAT WILL REQUIRE THE TEMPORARY CLOSURE OF ACCESS, SUCH AS CONDUIT INSTALLATION, EXISTING PAVEMENT EXCAVATION, TEMPORARY DRIVEWAY PAVEMENT PLACEMENT, AND SIMILAR OPERATIONS.
7. THE FIRST TEN PLASTIC DRUMS OF A TAPER SHALL BE MOUNTED WITH FLASHERS SEQUENTIAL.
8. THE ADVISORY SPEED LIMIT, IF REQUIRED, SHALL BE DETERMINED BY THE ENGINEER.
9. DISTANCES ARE A GUIDE AND MAY BE ADJUSTED IN THE FIELD BY THE ENGINEER.
10. MAXIMUM SPACING OF TRAFFIC DEVICES IN A TAPER (DRUMS OR CONES) IS EQUAL IN FEET TO THE SPEED LIMIT IN MPH.
11. MINIMUM LANE WIDTH IS TO BE 11 FEET UNLESS OTHERWISE SHOWN. MINIMUM LANE WIDTH TO BE MEASURED FROM THE EDGE OF DRUMS.
12. ALL SIGNS SHALL BE MOUNTED ON THEIR OWN STANDARD SIGN SUPPORTS.



**DETOUR PLAN**  
DETOUR LENGTH = 4.9 MILES  
NOT TO SCALE