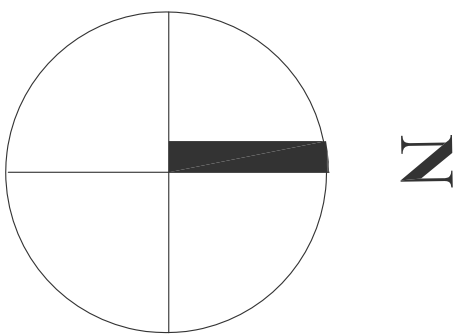


DOI: 10.1002/for

THIS FRICK IS PLANNING

Landscape Architecture & Land Planning

PLAN NOTES



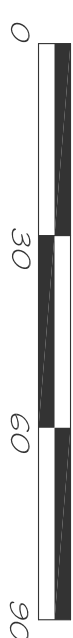
GRAPHIC KEY

- | | |
|--|-----------------------|
| | PROPERTY LINE |
| | BUILD SETBACK |
| | EX/PRO WELL |
| | WELL SETBACK |
| | EX TREE LINE |
| | PRO TREE LINE |
| | EX/PRO SLOPE |
| | PRO SLOPE |
| | PRO SLOPE |
| | PRO WATER LINE |
| | PRO SEWAGE LINE |
| | PRO PROPANE LINE |
| | PRO ELECTRIC LINE |
| | PRO DRAIN LINE |
| | BENCHMARK |
| | SOIL TEST PIT |
| | PERCOLATION TEST PIT |
| | UTILITY POLE |
| | EX/PRO FRESH RUB |
| | EX/VEG. TO BE REMOVED |

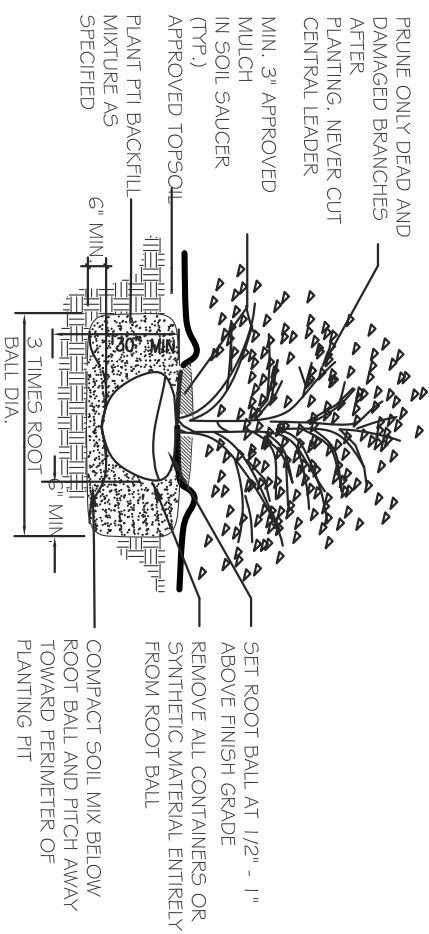
GENERAL CONTRACTOR NOTES

- [illegible]

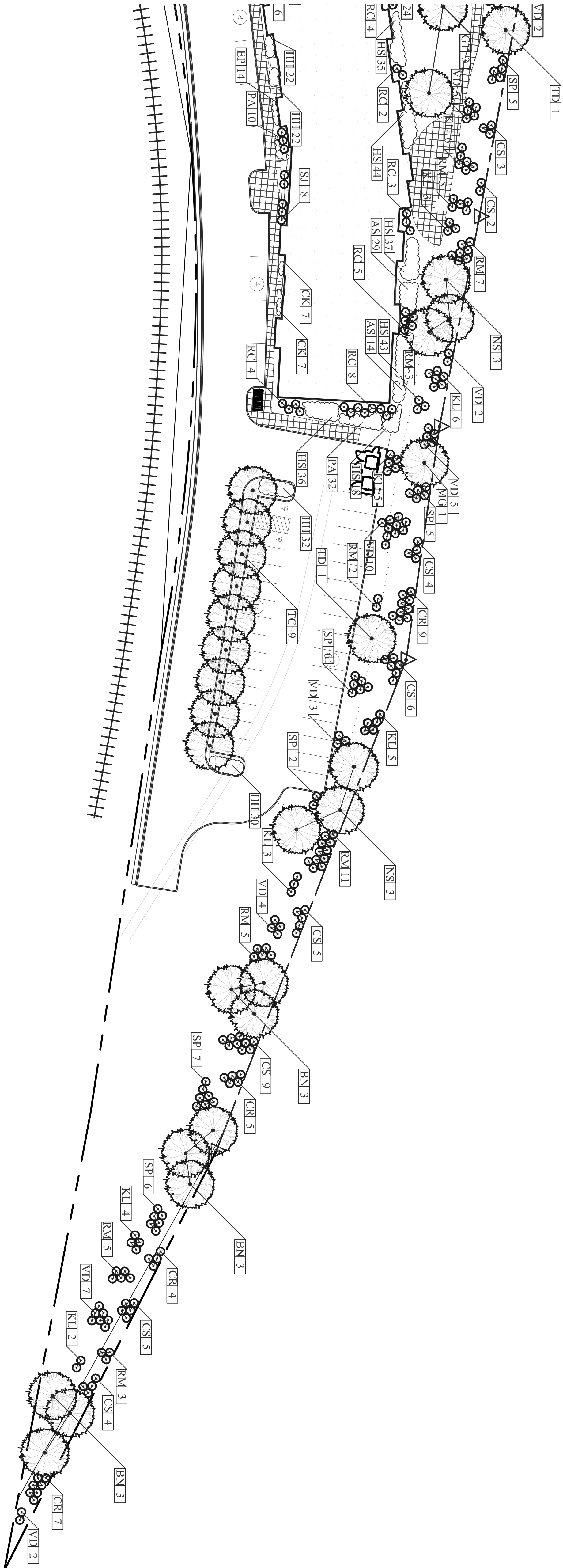
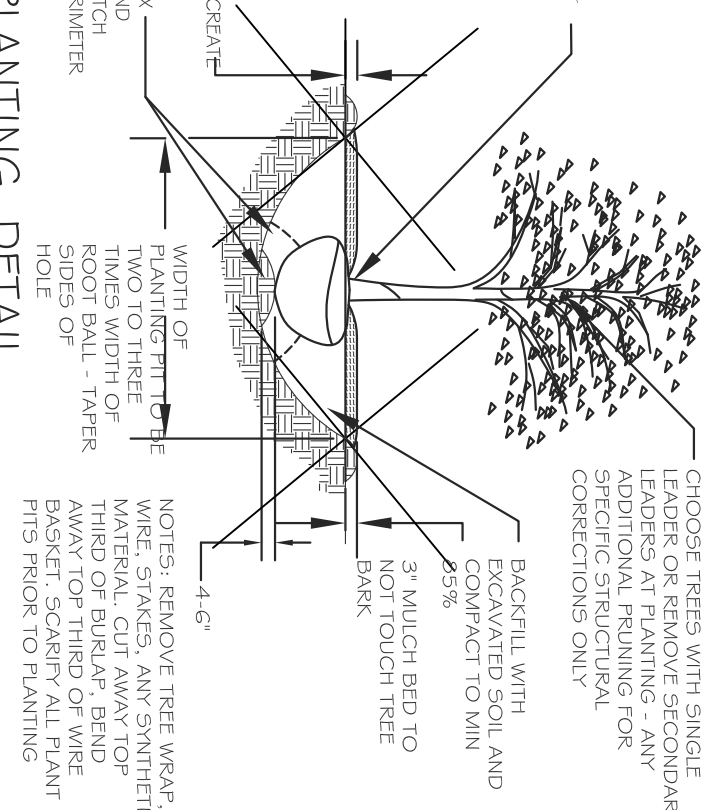
PLAN VIEW



SHRUB PLANTING DETAIL



2 TREE PLANTING DETAIL



Plant Totals				
Trees				
Symbol	Latin Name	Common Name	Quantity	Size
GT	Gleditsia thuracanthos var. nemris	Honeylocust	10	2'-2 1/2' Cal
CO	Cornus kousa	Kousa Dogwood	9	2'-2 1/2' Cal
3C	Syringa reticulata 'Ivory Silk'	Ivory Silk Lilac Tree	7	2'-2 1/2' Cal
TR	Tilia cordata 'Greenspire'	Greenspire Linden	17	2'-2 1/2' Cal
AR	Acer rubrum	Red Maple	24	2'-2 1/2' Cal
OP	Quercus palustris	Pink Oak	17	2'-2 1/2' Cal
AP	Pinus sargetti	Sargeant Cherry	6	2'-2 1/2' Cal
BN	Betula nigra	River Birch	9	2'-2 1/2' Cal
P5	Nyssa sylvatica	Black Tupelo	12	2'-2 1/2' Cal
TD	Taxodium distichum	Bald Cypress	3	2'-2 1/2' Cal
MG	Metasequoia glyptostroboides	Dawn Redwood	2	2'-2 1/2' Cal
	Larix laricina	Larch	2	2'-2 1/2' Cal

Symbol	Latin Name	Common Name	Quantity	Size
M5	Miscanthus sinensis	Maiden Grass	389	1 gal.
CK	Calliandra x acutiflora	Father Red Grass	292	1 gal.
CA	Clethra alnifolia	Sweet Pepperbush	85	1 gal.
SJ	Spiza japonica	Japanese Meadowweet	89	1 gal.
VD	Viburnum dentatum	Arrowwood	61	1 gal.
VP	Viburnum pubescens subsp. microphylla 'Superba'	Little Leaf Blue	36	1 gal.
RM	Rumex crispus maximum	Mountain Rumex	55	1 gal.
KL	Kalmia latifolia	Northern Laurel	55	1 gal.
CR	Cornus sericea	Red Twig Dogwood	66	1 gal.
CR	Cornus racemosa	Gray Dogwood	70	1 gal.
TR	Thuja occidentalis	Arbitvize	36	1 gal.
Formalis	Rhododendron mucronulatum 'Cornell Pink'	Korean Rhododendron	26	1 gal.
Symbol	Latin Name	Common Name	Quantity	Size
AR	Aster 'Rheinland'	Aster	203	1 gal.
HH	Hemerocallis x 'Happy Returns'	Daylily	411	1 gal.
PA	Pennisetum alopecuroides 'Hameln'	Fourtan Grass	372	1 gal.
H5	Hosta sieboldiana 'Elegans'	Hosta	340	1 gal.
EP	Echinacea purpurea	Coneflower	351	1 gal.
EP	Rudbeckia hirta	Black Eyed Susan	275	1 gal.

AD

Greylock Design Associates

• 4 Lime Kiln Rd.
Lenox, MA 01240
P. 413-637-8366

• 784 B Tremont St.
Boston, MA 02118
P. 617-351-0108

NEW/REVIEW/PERMITTING
September 21, 2003

PLANTING PLAN FOCUS SECTION #1

number

L-102

Sheet of 4
