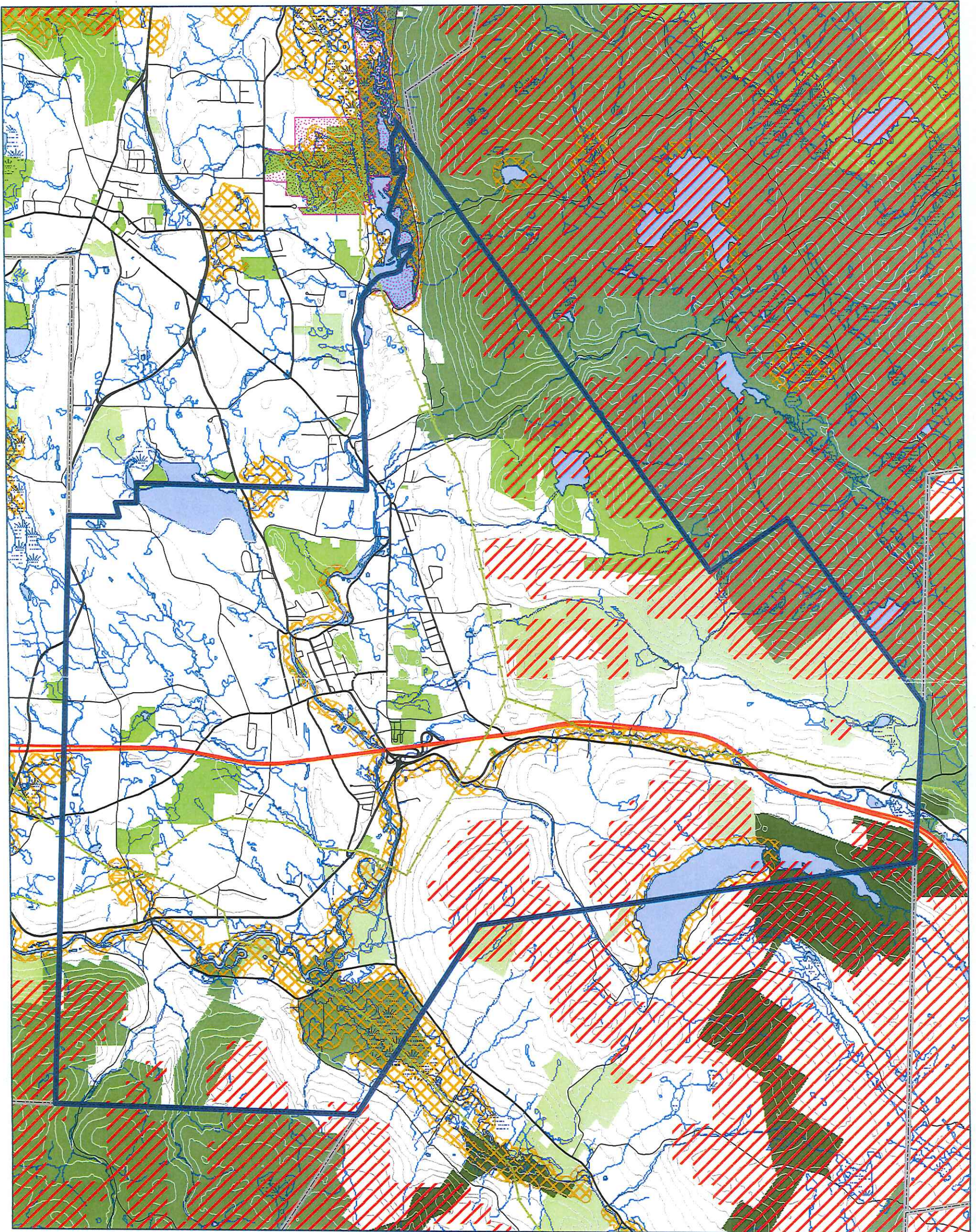


Wind Power Generation Potential Lee



Green Communities Technical Assistance

- | | | |
|-----------------------------|----------------------------|----------------|
| Wind Speed > 6.0 m/s at 70m | Important Bird Areas | Interstate |
| Transmission Lines | Endangered Species Habitat | Major Road |
| Federal Land | Streams | Minor Road |
| State Land | Intermittent Stream | Local Road |
| Municipal Land | Open Water | Contours - 30m |
| Other Protected Land | Wetland | |